



# NELSON HIRSCH

## PUREBREDS

### **2nd Annual Spring 4 Breed Bull Sale**



---

**March 11, 2021**  
**Del Bonita, Alberta**





**Grant & Connie Nelson**

### 8 Nelson children with their families.

Dear friends.

I want to personally thank you for the love, support, and friendship that we have been blessed with this past year. With the passing of my father a year ago, Covid, Home schooling, no sports, limited activities, etc, it has been an interesting year. 2020 is finally behind us. I hope that we are going to get back to normal soon. I am excited to invite you out to our 2021 spring production sale. We have a fantastic group for sale again this spring. We have been working very hard over the past number of years building our herds, and we are very proud of our cattle. With another years worth of data from our Growsafe pens, we have been able to learn a lot more about the efficiency of our cattle. Feed efficiency is very important to us, but not the only thing that we look at in our selection process. It is a very valuable tool though. The less feed that we have to buy and feed to get the same result really affects our bottom line. Especially with the near record feed costs that we have been experiencing these past few years. Feed barley has blown through previous record highs with no immediate signs of retracting. It's good to be a grain farmer today. This makes efficient cattle far more valuable from a feed cost perspective. Feed efficiency is important, but it's not the only attributes that we look at. There is lots of studying and research that goes into finding the right kind of cattle for our operation. We run a large commercial cow herd that feeds into our feedlot, and use all of our genetics in our our herd, so we are looking for the best. We trace the animals through the feedlot, and are always trying to maximize performance and profit.

It has sure been a crazy year. Who would have ever thought that 2 weeks to slow the spread last March, would have turned into an entire year of lock downs. It has been difficult in the feeding industry this past year as well. From the plant closures and record feed grain prices, its taken all of the fun out of the feedlot market. We are optimistic that the virus will be defeated, and life will return back to normal soon. People have learned the importance of our food supply, and are a lot more mindful of where their food comes from, and the distribution pipeline. I hope that we have all learned more, and are better prepared to face the uncertainty that we see in our lives. Protecting our food supply will be on our minds for a while. Cattlemen take great pride in the product that we produce, and together we will continue to produce a safe, desirable product. Alberta Beef is awesome. I love it!! I eat it every week.

Once again we will have people at the sale to explain our Growsafe program and what we are learning from it. Brad Smith has been a valuable resource to us as we have been studying and analyzing this Data. Feel free to call Brad at (403)489-0694 He can answer any of your questions that you have for our Growsafe data. He has spent hours researching and studying our bulls.

We are very excited to invite you to our Spring 2021 Production Sale at the Del Bonita Ranch. Located 7 miles west of the Del Bonita store on the 501 Hwy. Give us a call and come visit anytime. You can also look up some info on our website, [www.nhpurebreds.com](http://www.nhpurebreds.com).

I look forward to visiting with you this spring. Call anytime.

Jeff Nelson  
Nelson Family Ranches Ltd.  
403-635-7078

### The Ownership Group



L to R: Josh Smith, Shawn Nelson, Kevin Nelson, Grant Nelson, Jeff Nelson, Jimmy Nelson



Jeff & Angie Nelson Family  
Jeff - President, Angie - Office Manager



Jimmy & Patti Nelson Family  
Jimmy - Cattle Operations Manager (403) 635-7075



# WELCOME



**Grant & Annette Hirsche**

Welcome to our 2nd Spring Bull Sale already. If you're breeding for muscle, carcass and feed efficiency, this is the sale for you. I am really happy with this set of bulls. They are my kind, Muscle, Muscle, and more Muscle. Once again we have something for everyone. This set of Charolais bulls is truly impressive. They have hair, muscle, performance without compromising birth weight. Some

of the newest, and best genetics will be on offer.

Our Angus Bulls also have stepped up a notch or two in quality. They too are showing more muscle than the average and excel in calving ease. The maternal strength of this group is also impressive.

We only have a few Hereford and Hereford Plus bulls on offer, but I guarantee you will be amazed at the quality. Don't forget we have approximately 400 Hereford bull calves to pick from. There are Herd bulls in this group for sure.

Our last and probably the most exciting is our Simmental division. As we cross our Simmentals with both our Angus and Herefords, it's truly amazing to see the quality and consistency in the group. This is our smallest group by far to pick from and yet it's definitely one of our top groups. Our Hereford/Simi crosses are truly impressive. Don't forget all the bulls are backed by years of Ultrasound data and all bulls have gone through the grow safe trial. The data is in the catalog or will be available sale day. Some of the bulls are still on test, so the data will be posted on our web page [www.nelsonhirschepurebreds.com](http://www.nelsonhirschepurebreds.com) and available sale day. All sale 2 year olds, ran on grass with no extra feed till October. They are the soundest, and best footed bulls we've offered. All bull calves just ran on grass with their mothers and no creep until they were weaned also in October.

Once again we sincerely thank you for your loyalty and support. All sale cattle will be at the ranch in Del Bonita from March 5. Please feel free to come by anytime and inspect this offering.

Grant Hirsche

Nelson Hirsche Purebreds

403-652-8254



**Grant & Annette Hirsche Family**

## **Nelson Hirsche Purebreds**

P.O. Box 20

Box 388

Del Bonita, Alberta

Stirling, Alberta

T0K 0S0

T0K 2E0

**WWW.NHPUREBREDS.COM**

Ranch Office	(403) 758-6105
Grant Hirsche	(403) 652-8254
Jimmy Nelson	(403) 635-7075
Jeff Nelson	(403) 635-7078
Kelly Milward	(403) 849-8140

## **2nd Annual Spring Bull Sale** **March 11<sup>th</sup>, 2021 at 1:00pm**

**Cattle available for viewing**  
**at the Ranch in Del Bonita**  
**March 8-11 all day.**

**Note: Due to Covid protocols, we will be serving a light lunch with social distancing measures in effect. Lunch served at 12pm**

### **SELLING 108 BULLS**

#### **41 Charolais**

- 20 Bull Calves
- 21 Two Year Old Bulls

#### **31 Angus**

- 8 Bull Calves
- 23 Two Year Old Bulls

#### **18 Simi & Simi/Angus**

- 9 Bulls Calves
- 9 Two Year Old Bulls

#### **18 Hereford & Hereford Plus**

- 11 Bull Calves
- 7 Two Year Old Bulls

**Can't make it to the sale?**  
**Internet Bidding Available.**

To view this sale visit [www.dlms.ca](http://www.dlms.ca), Fill out the registration form located under registration and sign-up for your free user account and select a username and password.

**BIDDERS** - To be approved as a bidder, Log in to [dlms.ca](http://dlms.ca) and click BUYER APPROVAL tab, select the sale you are interested in bidding at and click sign up.

**For more information**  
**Call DLMS Reps:**

**Whitney Bosovich 780.991-3025**  
**Mark Shologan 780.699.5082**

**DLMS**  
[www.dlms.ca](http://www.dlms.ca)

Carcass & Growsafe data and photos will continue to be updated online up to sale day

# ACKNOWLEDGEMENTS

CAA CEO:

Myles Immerkar (403) 571-3580

Alberta Angus Association President:

Blake Morton (403) 665-2023

CCA Ceo Craig Scott (403) 250-9242

Canadian Charolais Association President:

Mike Elder (306) 267-5655

Canadian Simmental Association President:

Marlin LeBlanc (306) 421-2470

CHA Western Canada Field Rep

Judy Finseth (403) 275-2662

EMBRYO TRANSPLANT

DRI – Dr. Adam Schierman (403) 946-4551

Dr. Roger Davis (403) 804-0213

ANIMAL HEALTH

Dr. Todd Gunderson (403) 448-0448

Sunny South Vet Services 1(877) 588-9494



Dr. Todd Gunderson  
(403) 448-0448



Dr. Roger Davis  
Director of International Marketing  
Davis-Rairdan Embryo Transfer  
(403) 804-0213

## SPECIAL NOTE FOR AMERICAN CUSTOMERS

Due to the strong American dollar, there will be close to a 20% discount.  
US\$8,000 will buy close to C\$10,000.

**Sunny South**  
VETERINARY SERVICES LTD.

**LIVESTOCK HEALTH SUPPLIES**

A proud supporter of the Canadian Livestock Industry

**Best wishes to Nelson Family  
Ranches & Hirsche Herefords &  
Angus for their 2018 Production  
Sale!**

**www.sunnysouthvet.com**

**1-877-588-9494**

## Nelson Hirsche Purebreds

P.O. Box 20, Del Bonita, Alberta T0K 0S0

www.NelsonHirschePurebreds.com

## SALE DAY PHONES:

Ranch Office (403) 758-6105

Grant Hirsche (403) 652-8254

Jimmy Nelson (403) 635-7075

Jeff Nelson (403) 635-7078

Kelly Millward (403) 849-8140

Annette Hirsche (403) 652-0456

**\*\*All Marketing Agents listed on page 5 will be available with phones sale day.**

## TERMS & CONDITIONS:

**Guarantee:** Standard Canadian Hereford Association, CAA, Charolais and Simmental guarantees apply. We do, however, follow up on all animals sold to insure satisfaction.

**Health:** The Herd is maintained in a TB and Brucellosis free area and the Cowherd is annually vaccinated for IBR, P13, BVD, BRSV and Vibrio. All Sale bulls have also been treated with Ivermectin.

**Terms:** Cash Sale day, unless previous arrangements have been made. We will make every effort to accommodate your needs. Cattle become the responsibility of the buyer after purchase. Cattle will not be delivered till payment is made in full or special arrangements made.

**Sight Unseen Program:** Call and let us help select the right animal for your needs. We guarantee the best possible animal for the best possible price. If you aren't satisfied with our choice, we take them back.

**Other Information:** All announcements from the Auction Stand take precedence over any other information written or oral. PHONE and INTERNET BIDS accepted.

For In Herd Semen Interests in Bulls announced sale day:

**WE ARE RESERVING THE RIGHT TO DRAW SEMEN ON ANY OF THE BULLS SOLD IN THE SALE TO BE USED IN OUR OWN HERD ONLY. THIS WOULD BE DONE AT OUR EXPENSE AND THE BUYER'S CONVENIENCE.**

At Buyer's request, we will provide all health, customs and brokerage papers, and delivery of the cattle to the U.S. SIDE OF SWEETGRASS, MONTANA at no charge. Trucking from that point will be the buyer's responsibility. Help with arrangements for trucking to final destination is available. \*NOTE if you want us to do your paperwork, you must provide your IRS number sale day.

**Wintering:** All bulls will be wintered free of charge until April 1st, 2021. Please make arrangements to pick up your bull April 1. Bulls can also be picked up at our Bull sale March 11 if you would like. \$100 /month will be charged after April 1st. \$200/ bull will be deducted from the 2 yr olds if they are picked up sale day or within a week after the sale. Commercial heifers: We will help with delivery arrangements, and can help deliver large groups.

**Bulls must be picked up by April 1st, 2021.**

**RANCH LOCATION:** Del Bonita, Alberta On the USA/Canada border. Highway 501, between Whiskey Gap and Del Bonita, Alberta. Turn south at Range Road 230.

**Directions from GREAT FALLS AIRPORT:** Approx 2.5 hours. Drive north on I-15, and west on Highway 501.

## Accommodations:

Cardston South Country Inn (403) 653-8000

Lethbridge Comfort Inn (403) 320-8874

Shelby, MT Best Western Inn (406) 424-4560



# THANKS TO OUR MARKETING CREW

Welcome Livestock Producers To the Nelson Hirsche Spring Bull Sale.

The success of the Nelson Hirsche operation starts with the formula of a complete program!

A powerful purebred & commercial cow herd.

A very efficient feedlot division and an every day hands on approach to the cattle business.

Performance & efficiency data, 205 day & yearling index data, and a full ultrasound evaluation, all play a huge part of the operation. Feed efficiency testing on all the bulls is another asset to your selection criteria!

Once again a great offering of charolais, angus, simmental, hereford and hereford plus bulls. The genetics from this great herd gives both the commercial and purebred breeder the opportunity to be part of a proven program!

Come and be part of a program that works! A bull for all your needs!

See you at the sale!

Respectfully,

*Bob*  
Robert C. Balog



**Balog Auction Services**  
403-320-1980      balogauction.com



Louie Balog  
403-320-1980  
403-331-0611



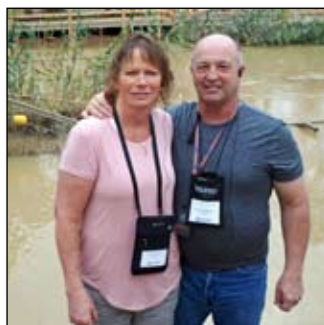
Bob Balog  
403-382-5777  
403-320-1980



Bob Goble  
US Representative  
(616) 299-8681



Kevin Murnin  
American Hereford Rep  
(406) 853-4638



Darryl Anderson  
(403) 653-7804  
(403) 653-1385



Tom Elliot  
(403) 882-1267



Bill Wilson  
(403) 325-4695



Roger Peters  
(403) 828-9815



Mexican Representative  
Antonio Tejada  
52-493-959-9437



Rob Chomik  
Charolais Banner Rep  
780-336-6124

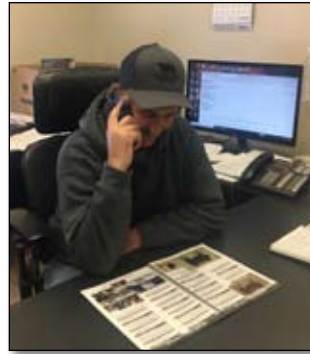
TL Lund Order Buying  
Bonnie 403-308-4566  
Terry 403-382-0991



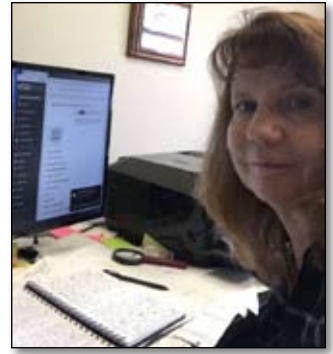
## DEL BONITA CREW



Ranch Manager  
Kelly & Tracy Millward  
403-849-8141



Office Staff  
Grant Hirsche  
(403) 652-8254



Annette Hirsche  
Animal Records  
403-758-6105



Silvestre Mendoza & Family  
(in charge of keeping us happy!)

## DEL BONITA COWBOYS



Kelly Millward



Cooper Millward



Emmett Eyre



John Milne



Silvestre Mendoza

## STIRLING FEEDLOT CREW



Cheyne Williams, Dustin Brown, Stetson Roberts,  
Ben Juhasz, Ty Anderson, Reg Paxman

## STIRLING COW CAMP CREW



Cheyne Williams, Dave Shipley, Reg Paxman, Darcy Huber



# RAISING NHP BULLS FOR THE FEEDLOT & RETAIL INDUSTRY

## Nelson Family Ranches Feedlot - Stirling, Alberta



Steers from Elieen Juhaz, Cactus Coulee, Reany Laye



Steers from Brian Yasieniuk



Steers from Brad and Street Helgersen and all the Francis families



### NHP Bulls raising steers that work in the Feedlot



Mike Smith  
General Manager  
(403) 308-8074

At our feedlots, animal welfare is a priority from day one. All cattle are individually identified upon entry; and their history is recorded and tracked from arrival to slaughter. Our staff adhere to our veterinarian procedures and protocols to ensure the health and welfare of all animals under our care. In the past 3 years, we've kept some of our calves separate so we can track their performance. Our ultimate goal is to provide you as much data as possible on your calves. The more information you have, the more informed you can be when it comes to purchasing bulls. In short, with data already on the bulls, in combination with data on your calves, you can select bulls that are tailor made for your needs.

We invite customers to stop in and visit anytime to have a look at the animals they raised.



### NHP sired steers that work for the consumer.

Won Gold Award "Best Place to Buy Meat"

Calgary South Region

Raising top quality meat should be our ultimate goals.



# RAISING NHP BULLS FOR A PROFITABLE COW HERD

**BWF steer from Nelson Family Ranches' cow herd**



**NHP cow herd**



## Tools we use to ensure NHP Bulls work for Cow/Calf, Feedlot and Retail.

**1**

### **TOOL #1: Growsafe**

2021 Sale bull calves on Growsafe test.



2020 Spring bull calves now on test to be completed mid November 2020. Data available for December 4th and March 11 bull sales.

### **Why we use Growsafe & RFI Data?**

We have always tried to use every tool available to help our customers and our own program in selecting the best genetics available. As time moves on, we keep getting more and more technology to aid in our selection. The Feed Efficiency knowledge is fast becoming one of the most critical forms of data that has come along in recent history. It will help us select bulls and females that eat less and convert more, thus putting real dollars in your pocket. Therefore we have spared no time or expense in being able to get you this data. 2018 we put in our Grow Safe System where we have RFI tested almost 1000 bulls. (All 2 year olds in the sale have RFI data available in the catalog,) Our 2020 sale bull calves are on test now, and the data will be available sale day. So how do you understand this new technology and apply it to your operation? Sale day, we will have experts here to answer any questions and provide you with pertinent information to aid in you selection process. Also we've provided as much information in this catalog as possible to help you understand this better. We believe that this is a real tool that we need to implement into our cow herd. It is heritable and will not only help produce cows that are more efficient, but through RFI testing, we can reduce, greenhouse emissions such as ethane by 30%. (see paragraph 1 on page 10 of this catalog)



## GrowSafe RFI Quick Facts

### FREQUENTLY ASKED QUESTIONS

**What are the benefits of selecting for low residual feed intake (RFI) animals\*:**

- Reduction of overall feed intake by up to 12% while maintaining the same level of production
- Reduction in the maintenance requirements of the herd by 9-10%
- Improvements in the feed conversion rates of calves of from 9-15%
- Reduction of manure NPK production by 17% and greenhouse gas emissions such as methane, by 30%

**What does this mean for a cow herd?**

By selecting for RFI, or introducing several low RFI bulls into your herd, feed-related savings will continue to increase. Several years of genetic selection will improve the baseline feed efficiency of the ranch and savings will continue to transfer to the cow herd as replacement heifers are retained.

**What is Residual Feed Intake (RFI)?**

Residual feed intake (RFI) is a measure of feed efficiency that is calculated as the difference between an animal's actual feed intake and its expected feed intake. RFI is independent of body weight and size. Differences in the trait cannot be detected by physically looking at an animal, it requires accurate and simultaneous measurement of an animal's feed intake and body weight. Animals with low RFI values are more efficient than those with high RFI values.

**What is the heritability of RFI?**

RFI is a moderately heritable trait (26-58%), and when used as a selection tool, will result in progeny that consume less feed for the same level of production. RFI is independent of growth, body size and other performance traits, meaning that selection for animals with low RFI will lead to reduced feed intake and improved feed efficiency without compromising body size or growth.

**Does selection for low RFI animals, that eat less, result in reduced performance and average daily gain (ADG)?**

No, selection for RFI does not result in cattle with reduced performance and ADG. Efficient and inefficient cattle can have both high and low ADGs. To prevent a decline in performance, it is important to select for low RFI animals with sufficient ADG. GrowSafe does not recommend single trait selection.

**How is RFI calculated?**

RFI is calculated as the difference between an animal's actual feed intake and their expected feed intake. An animal's expected feed intake depends on its body size and growth rate. The calculation for expected feed intake is comprised of data from the entire contemporary group using the animals' dry matter intake, mid-test metabolic body weight and average daily gain data. The GrowSafe data analysts use the data captured automatically and continuously by the Feed Intake technology to determine each individual animal's actual feed intake, which is compared to their expected feed intake. Concurrently, the highly accurate partial body weights collected from the GrowSafe Beef® technology are used to determine each individual animal's average daily gain and body weight.

Example:

	Expected Intake	Actual Intake
Animal A	8.5	10
Animal B	10	9.5

- Animal A:  $RFI = 10 - 8.5 = 1.5$

- Animal B:  $RFI = 9.5 - 10 = -0.5$

Animal B is more efficient because it has a lower RFI value and because it eats less than expected for its size and level of production.

\*Residual Feed Intake (Net Feed Efficiency) in Beef Cattle. (2006, July). Retrieved January 3, 2019, from [https://www1.agric.gov.ab.ca/\\$department/deptdocs.nsf/all/agdex10861/\\$file/420\\_11-1.pdf?OpenElement](https://www1.agric.gov.ab.ca/$department/deptdocs.nsf/all/agdex10861/$file/420_11-1.pdf?OpenElement)

# OUR COMMITMENT TO OUR CUSTOMERS

**We must raise bulls that sire profitable cattle for the feedlot and build a profitable cow herd.**

**2**

## **Tool #2: Ultrasound - We have ultrasound data for 30 years.**



### **WINDY RIDGE ULTRASOUND**

Ultrasound has been used to evaluate beef carcass on live cattle since the late 1950's. I started doing carcass ultrasound testing, commercially, in 1994.

Nelsons and Hirsches were some of the earliest supporters of carcass ultrasound and now many of their bloodlines excel in desirable carcass traits. Without the knowledge of individual carcass traits, breeding to achieve desired outcomes would be difficult.

Today's finishing feedlots are very good at tracking producers' cattle right through the feeding process to harvest. They know which cattle are making the most money and the next time they are bidding on those cattle they will pay more to get them. Desirable carcass traits are one of those factors that can add to the profitability.

Percent Lean Meat Yield (what percent of the carcass is lean muscle) is calculated using the Backfat (BF) and Ribeye Area (REA) where the BF reduces Yield about 7 or 8 times more than REA will increase Yield. Weight adj. REA tells us how many square inches of REA there are for every 100 pounds of weight. (1000# bull with a 10" REA would be a Weight Adj. REA of 10 square inches of REA per 100#'s of body weight) A bigger bull should have a bigger REA so the Weight Adj. REA is like comparing apples to apples.

It is a real pleasure working with Nelson Hirsche Purebreds as they are very progressive in their use of technology and still use the tried and true tools that have made them so successful.

Yours truly,

Rod Wendorff

rod@cattleultrasound.ca 403-330-3000

**3**

## **Tool #3: EPDs**

### **(Expected Progeny Difference)**

**EPDs-** The prediction of how future progeny of each animal are expected to perform relative to the progeny of other animals listed in the database. You cannot compare EPDs across other breeds. Each breed association calculates that breed's EPDs

**BW-** Birth Weight EPD, expressed in pounds, is a predictor of a sire's ability to transmit birth weight to his progeny compared to that of other sires.

**WW-** Weaning Weight EPD, expressed in pounds, is a predictor of a sire's ability to transmit weaning growth to his progeny compared to that of other sires.

**Milk-** Maternal Milk EPD is a predictor of a sire's genetic merit for milk and mothering ability as expressed in his daughters compared to daughters of other sires. In other words, it is that part of a calf's weaning weight attributed to milk and mothering ability.

**TM-** Total Maternal, Maternal weaning weight EPD measures a sire's ability to transmit milk production and growth rate through his daughters. It predicts the weaning weight of a sire's daughter's calves. It is equal to his milk EPD plus one half his weaning weight EPD.

**REA -** Ribeye area EPD is a predictor of the difference in square inches of ribeye area of a sire's progeny compared to the progeny of other sires.

**IMF-** Marbling – Intramuscular Fat EPD is a predictor of the difference in a sire's progeny for percent intramuscular fat in the ribeye muscle compared to other sires.

**4**

## **Tool #4: Herdtrax**

### **Herdtrax is being used along with our breed association for herd health data collection and EPDs.**

The Nelson and Hirsche Families have recently enrolled their entire cow herd (purebred and commercial) onto Herdtrax. Herdtrax is an online record management program that is based on the detailed collection of data on each individual animal at all key health and production points. The philosophy is "What's measured improves." The goal of the entire exercise is to acquire and share meaningful data on all of the animals produced at NFR and use this information to assist the commercial producer with making better decisions regarding what type of bulls work best in their program and to also provide the Nelsons with valuable feedback on how their bulls are working for each commercial producer in their respective environments. NFR are unique in that they also have a substantial feeding operation and are able to provide a conception to carcass (C to C) network through the buyback of progeny from the bulls sold in their sale. These purchased cattle will be subsequently fed until harvest when individual live weights, gains and carcass data is returned and when possible linked back to the dam and sire. Ultimately, the Nelsons would like to provide their bull buying customers with useable and actionable information that will aid in improving the overall quality and efficiency of each respective herd.

Herdtrax Inc. is proud to have the opportunity to work with the Nelson-Hirsche Families and if you have any questions regarding their Herdtrax data sharing network contact myself directly.

Yours truly,

Troy Drake

troy@herdtrax.com

403-540-8934



# READING THE LOT DATA DERIVED FROM THE 4 TOOLS

## 1

## Grow Safe Explained

This is the Third year Nelson Hirsche Purebreds (NHP) are using GrowSafe to measure the feed efficiency of their young breeding stock.

GrowSafe technology measures the feed intake of individual animals and their weight gains. When an animal puts its head in a GrowSafe feed bunk, its RFID tag is read and the feed intake is calculated. When the animal goes to the water trough its weight is calculated.

Cattle are on test for approximately 2 months which gives an excellent representation of their efficiency. Through this process Residual Feed Intake (RFI) is calculated which is the difference between their actual and expected dry matter feed intake.

The lower the RFI value is the more efficient an animal is. For example, an RFI value of -2.1 means an animal is projected to consume 2.1 less pounds of dry matter per day than what is expected for its size and weight gain.

The goal of NHP is to select highly efficient breeding stock, stacked generationally, that will bring improvements to their breeding herd and increase value for their clients.

Calculations are all based on data acquired from the GrowSafe feed trials:

- **ADG (Average Daily Gain)** - animal's weight gain divided by days on trial.
- **Eff (Feed Efficiency Ratio)** combines an animal's efficiency and ability to gain weight, weighted 60% on RFI and 40% ADG.
- **F/G (Feed to Gain index)** - feed conversion is calculated by an animal's average dry matter intake divided by its ADG. For example, a 5.62 F/G value means an animal consumed on an average 5.62 pounds of dry matter for each 1 pound of gain.
- **RFI (Residual Feed Intake)** - the average pounds of feed consumed by an animal per day minus its expected feed intake. Negative is better
- **NHP% (Nelson Hirsche Purebred Balanced Index)** -  $(\text{ADG Index} + \text{F/G Index} + \text{RFI Index}) / 3$

We have developed the **NHP%** which equally weights an animal's **growth, feed conversion, and efficiency**. An animal with an 100% NHP index would be average in its contemporary group. Animals with higher NHP indexes are likely going to have offspring that are more productive and efficient through growth and maintenance. All calculations are made from data received from GrowSafe, a third-party provider. All animals are sorted into contemporary groups according to breed, trial start date and weights, age, and gender.

Example of data shown on each sale Lot:

### GrowSafe Data

ADG	EFF Index	FEED to GAIN	RFI	NHP Index
2.71	92	8.36	2.2707	92

### Feed Efficiency Test

ADG- Average Daily Gain during test

EFF- Efficiency Index

F/G- Feed to Gain (ex. 5.1 lbs eaten = 1 lb gain)

RFI- Residual feed intake

NHP Index -  $\text{ADG}/\text{F/G}/\text{RFI} = \text{NHP Index}$



**Bradley Smith**  
RFI Specialist  
(403) 360-5716

## 2

## Ultrasound Explained

### Ultrasound Data – What do the numbers mean?

(Rod Wendorff)

All Carcass measurements are taken between the 12th & 13th ribs which is the industry standard.

- Ribeye Area (REA) is the size of the loin muscle in square inches ( $\text{in}^2$ ).
- Percent Lean Meat Yield (%LMY) is what percent of the carcass is lean muscle.
- Backfat (BF) is the thickness of fat covering the loin muscle in mm.
- PFat (Percent Intermuscular Fat/Marbling) 9+ is Prime, 4 to 9 is AAA/Choice, 2 to 4 is AA/Select, < 2 is A/Standard
- The Ranking is (RFI Ranking of 1-185 Hereford bulls that went through the GrowSafe)

### Ultrasound Data on each lot:

LMY	BK Fat	IMF score	REA in <sup>2</sup>	REA/100#
66.38	2.38	AAA	12.04	1.0

### Ultrasound Data

LMY- Lean Meat yield

BK Fat - Rib Fat

IMF score - Marbling

REA in<sup>2</sup> - Rib Eye Area square inches

REA/100 lbs - ex. 1 = 1 sq in of rib eye per 100 lbs

## 3

## EPDs Explained



All our Herefords are enrolled in the THE PROGRAM. (Total Herd Evaluation) is a complete herd reporting system to evaluate performance traits. Participants in the program provide performance reports (adjusted weights, indexes and ranks) and EPDs which are one run twice a year.

### EPDs and Performance Data on each lot:

EPDs	BW	WW	YW	MM	TM	REA	IMF
	3.0	50.3	81.2	22.6	47.8	0.35	0.08

### EPDs Table

BW- Birth Weight

WW- Weaning Weight

YW- Yearling Weight

MM- Milk

TM- Total Maternal  
(milk + growth combined)

REA- Rib Eye

IMF - Marbling

### Performance Data

BW	205	365	Sept WT
100	576	917	1270

### Performance & Growth Data

BW- Birth Weight

205- Adjusted 205 Day Weight

365- Adjusted 365 Day Weight

September 2020 Weight

## 4

## HerdTrax

If you are using HerdTrax, we will transfer all our HerdTrax records on the NHP bull you purchase.





# VALUED CUSTOMERS AND FRIENDS

Some of the people behind our successes

Thank you for your friendship and support over the years!



Palmer Family  
Raymond, Alberta  
Branson, Edward, Adam, Carlene,  
Tatum, Landon, Carolyn, Craig, Weston,  
Kira, holding Beau, Ethan & Logan



Trevor Virostek Family  
Mountainview, Alberta



Cactus Coulee Ranch  
Redcliff, Alberta  
Shane & Justin Hok



Cam & Nikki Francis  
Glenwood, Alberta



Mark & Melanie Francis  
Taber, Alberta



Bruce & Sandra Francis  
Taber, Alberta



(Back) Tyler, Tony, Otto, Abby,  
Ashley, Austin, Mike  
(front) Kevin, Greta, Jackie, Aggie



Eileen Juhasz  
The Diamond E Ranch  
Del Bonita, Alberta



Byron & Brodie Haugan  
and Molly the dog  
Orion, Alberta



Reany, Lana, Blake & Jenna Laye  
Cadogan, Alberta



Cinderlyn Farms  
Wes Howg  
Coaldale, Alberta



Mehew Ranches  
Welling, Alberta  
Don & Mona Mehew



# REFERENCE SIREs

## A LT AUTHORITY 7229 PLD

MC772435

March 14 2017

LHD CHOTEAU B1669 P JDJ JUSTICE U319  
LHD MS CIGARSON T983  
LT KATY 4273 PLD LT STAGECOACH 8068 PLD  
LT KATY 8042 PLD

CE	BW	WW	YW	MM	MTL	REA	MARB
11.7	-4.5	40	63	24	44	0.14	-0.07

MC772435 Being new to the breed, it's been a steep learning curve, especially when it comes to selecting new exciting Herd Bulls, that will keep us going in the right direction. We've so thankful for the help we've gotten from all the breeders, especially the Mcleods. Rod told us about Authority, so we jumped on board and can't believe the results. We thought the birth weight would be good, but we bonus, we also got performance. His calves in this sale are truly amazing



## B CML COPYRIGHT 714E ET

MC735139

CML 714E

January 03 2017

CJC TRADEMARK H45 LHD ALI MARK T214  
CJC MS PERFECT F57  
CML PLD WILMA 3S MERIT VINTAGE 4065P  
TARGET PLD GINNY 40P

CE	BW	WW	YW	MM	MTL	REA	MARB
5.4	2.8	57	112	19	47	0.54	0.44

When one buys a calf like "Copyright" one can only hope he becomes a great one. But one thing you can do is make sure that his mother and grandmother on both sides are superior and this we did when purchasing this herd bull prospect. Anyone that follows the Charolais breed knows that Copyright's mother is one of the top producing cows of the breed. She is the foundation cow for the Macleods who have sold hundreds of thousands of dollars of her progeny. Now that he is coming 4, we couldn't be more impressed with the growth, power and disposition this guy possess. His calves are truly outstanding. We used him on both heifers and cows with outstanding results. The hair and style he puts on these calves is second to none. Plenty to choose from in this sale.



## C CTP MR BAM BAM 350B

MC358975

CTP 350B

January 26 2014

JWX BUCKLE 1X JWX SILVER BUCKLE 524U  
JWX NEALA 47N  
CTP MISS JUNIPER 350Z PLEASANT DAWN MAXIMUM138X  
CTP MISS GLITTER 131S

CE	BW	WW	YW	MM	MTL	REA	MARB
9.1	-2.5	44	89	30	52	0.76	0.61

Three years ago, we needed a new walking bull so we called our good friend Dale Jorgensen who knows as much about this breed as any. He just happened to have this guy and didn't need him anymore as he had sold his cows. A lucky day for us. Not only is he a stud and walks like a cat, but he breeds outstanding. We have some Herd bull prospects in this sale. Pull up his EPDs, all categories are in the top 50% except fat, with milk in the top 2% and BW in the top 10%.



## D KAYR PROVIDENCE 910C

KAYR 910C

January 23 2015

KAYR VELOCITY 812Z ROLLING D CLASSIC 878U  
KAYR ANNABELLE 812U  
KAYR MISS 910W RGP REAL ESTATE 129R  
KAYR MISS 514R

CE	BW	WW	YW	MM	MTL	REA	MARB
1.8	1.9	52	92	20	46	0.50	-0.60

A Big Power Bull with lots of class and style. He has an outstanding disposition and still alert and heads up. This is his third calf crop and we love the performance they possess. The calving ease is great and they are some of our best calves. They just keep getting better as they grow. Used on our heifers and his females are outstanding. The more we use him, the more we are seeing his true value. We lost him last spring, so these are some of the last of his progeny to sell.



## E KAYR DOMINO 210D

MC711302

KAYR 210D

March 24 2016

KAYR LIBERTY 127A SVY LIBERTY 128Y  
KAYR MISS 127X  
KAYR GOTTA HAVE 210Z KCM PROWLER 2X  
JWX SASKATOON 320S

CE	BW	WW	YW	MM	MTL	REA	MARB
8.2	0	44	85	23	45	0.52	0.17

A bull we bought from KAYR for our commercial cows and couldn't have been happier with him and his calves, so we put him in our purebred program and Wow. What a breeder. Several herd bull prospects are his sons and the females are foundation cows. 210D has excellent feet and moves like a cat. Looks like he is passing it on to his progeny.





# REFERENCE SIRES



## F SAV PRESIDENT 6847

**BW: lbs** **IMP 6847D** **Jan 10, 2016**  
 COLEMAN CHARLO 0256 OCC PAXTON 730P  
 BOHI ABIGALE 6014  
 SAV BLACKCAP MAY 4136 SAV 8180 TRAVELER 004  
 SAV MAY 2397

CE	BW	WW	YW	MM	TM	REA	IMF
1.0	3.6	74	120	16	53	0.87	-0.10

When we look for a new Angus sire, they need lots of maternal and performance and hopefully have RFI data. President fits these categories and more. His calves are better than we hoped. Tons of growth, power, hair and good disposition. He will be one we use again. Several of the best sons we've raised at his.



## G DMM CRANK 13E

**DMM 13E** **20/03/2016**  
 74-51 SUDDEN LOOK 1023 B C LOOKOUT 7024  
 EXG LUCY P061 R3  
 DMM MISS ESSENCE 14Y GUMBO GULCH CREED 94S  
 DMM MISS ESSENCE 37T

EPDs	BW	WW	YW	MM	TM	REA	IMF
+5.2	+57	+90	+23	+52			

He is the best Angus bull to date that we have used. Bought semen when he was a calf and then purchased possession and 1/2 interest in 2018. We used him to service about 40 cows in April and May. Then he got a 45 day rest and went out for another 45 days till mid August. Estimated he naturally bred over 70 cows that spring and still had a huge weight of over 2500 lbs when he came in. Never have we used a bull with this kind of power and mass. Big foot, big testicles and just big and powerful all over. Disposition is second to none. He was named Grand Champion of Lloyd in 2019, so he is popular in the show ring as well. His disposition is second to none. A few featured calves will sell in this sale.



## H MAF FIRST IMPRESSION 4420

**BW: 77 lbs** **IMP 4420B** **16/04/2014**  
 DAMERON FIRST IMPRESSION S A V BRILLIANCE 8077  
 DAMERON NORTHERN MISS 3114  
 M A F MISS JETSTREAM 2928 LAGRAN MAF ANTIDOTE 5775  
 B M MISS JETSTREAM 2618

EPDs	BW	WW	YW	MM	TM	REA	IMF
-0.3	+52	+93	+28	+54	+29	+32	

Now after 4 years of use, we can say for a surety this is a low birth weight, high performing Angus bull. When Grant Nelson first saw this massive bull as a 2 year old, he thought he was the best Angus bull he had ever seen. Never did we believe he would be a heifer bull. His calves consistently come 10 to 12 days early. He has small babies that don't lack performance at weaning time. Instead they will compete with all of our other power herd bulls for performance and growth. After calving out his daughters we can say, they are definitely keepers. Really happy to have First Impression in our program.



## I SYDGEN ENHANCE

**IMP 5209C** **Jan 27, 2015**  
 SYDGEN EXCEED 3223 SYDGEN GOOGOL  
 SYDGEN FOREVER LADY 1255  
 SYDGEN RITA SYDGEN LIBERTY  
 FOX RUN RITA 9308

CE	BW	WW	YW	MM	TM	REA	IMF
10.0	0.2	65	133	27	59	0.69	1.09

Enhance was the number 1 sire of progeny registered by the AAA in 2020. He has sold several high dollar cattle of both sexes. This is impressive in a Herd Sire, however this is not why we decided to try this new AI sire in our program. We were most impressed by his low birth weight and more importantly by his good carcass, especially in marbling with a +1.09 EPDS, great performance EPDs and RFI. He This is our first calf crop and we feel he is doing what we hoped he would.



## J BAR-H CROSSFIRE

**AHPC 29C** **Mar 26, 2015**  
 BAR-H CROSSFIRE 63A S TITLEST 1145  
 HF TIBBIE 93U  
 BAR-H ECHO 97A HF BRUIN 96T  
 BH 7N SASHA 11R

CE	BW	WW	YW	MM	TM	REA	IMF
4.0	2.1	47	86	18	41	0.58	-0.08

A of couple years ago, we found ourselves down a walking bull and MJT was good enough to let us use Crossfire for that breeding season. We appreciated their help then, and even more now when we see how the calves from this bull have developed. His daughters will calve this year and if they are anything like this quote from MJT "His daughters have some of the best udders on the ranch;" we are looking forward seeing these cows milk. Again quoting MFT "Definitely a calving ease specialist with exceptional muscle pattern. It is hard to find a bull this muscled, free travelling and balanced. Check out his progeny in this sale.



# REFERENCE SIRES

## K WHEATLAND BULL 777E "SWEETIE"

**BW: 79 lbs** **LER 777E** **21 February 2017**  
 WHEATLAND KILL SWITCH WHEATLAND CIRCUIT BREAKER  
 HR/RR MS CANDACE T73  
 WHEATLAND LADY 3189A WHEATLAND BULL 124Y  
 WHEATLAND LADY 517R

CE	BW	WW	YW	MM	TM	REA	IMF
11.8	1.5	75.8	111.1	28.2		0.83	-.02

After our first sale, we could see that we needed to produce more red simi x bulls, so we went on the hunt for a power red simmental bull with outstanding feet and legs and a mother we would be proud of. Wheatland was our first stop and "Sweetie" 777 was our first choice and we couldn't be happier. He's moderate in frame, but has extra thickness and perfect feet and legs. We've never trimmed his feet and today they look like they've just been trimmed. The disposition is also great. I guess that's why a bull of this kind of mass and power got his nickname of "Sweetie." One can go out in his pasture at all times and give him a scratch. We do love his calves. Birth weights are really low. Been used 3 years in a row on our heifers.



## L ULTRA COWBOY 33E

**BW: 80 lbs** **TC 33E** **13 January 2017**  
 ULTRA CROWD TEASER 2C SVS CAPTAIN MORGAN 11Z  
 TNT MISS SADIE M68  
 ULTRA COWGIRL 17A REMINGTON 680 346W  
 ULTRA HUMMER COWGIRL 65W

CE	BW	WW	YW	MM	TM	REA	IMF
8.5	2.0	72.9	120.9	19.4		1.13	0.07

Ultra 33 was our other choice when looking for a red Simi herd bull. Once again we couldn't be happier. Ultra compliments 777 very well. He has a little more frame and performance with-out compromising style, muscle, and calving ease. He too has been used successfully on heifers. We're excited to continue using this young herd bull. He crosses really well with our Angus cows and now with our Registered Hereford cows to give us our Hereford Plus calves. His daughters should be his strength.



## M CROSSROAD BLACK JOLT 41C

**BW: 98 lbs** **CRF 41C** **11 January 2015**  
 SPRINGCREEK ALL IN 155Y HART ALL IN W382  
 SPRINGCREEK BLK TESS 73T  
 CROSSROAD ROSEMARY 394R LCHMN BODYBUILDER 7303F  
 CROSSROAD MAKAYLA 185M

CE	BW	WW	YW	MM	TM	REA	IMF
4.3	3.1	76.1	103.7	25.6		1.01	-.06

Purchased Black Jolt from Crossroads on the strength of his muscle, depth of body and especially the cow family behind him. His mother has produced several great bulls for Crossroads. We are exceptionally happy with his sons and with his daughters he is producing. They are very consistent and look a lot like their dad. The daughters are rising to the top of our Simi/Angus Herd.



## N GH EAGLE'S ROCK 599E

**BW: 83 lbs** **NHP 599E** **07/05/2017**  
 GH 7101 ROCK SOLID 5Z UPS JT NEON 7101 1ET  
 GH-ADAMS STONETTE 542S  
 BP 144P STANDARD LADY 75Z K 68L STANDARD LAD 144P  
 BP 124P RIBSTONE LADY 79W

CE	BW	WW	YW	MM	TM	REA	IMF
1.3	+3.7	+60.8	+99.8	+18.2	+48.6	+0.45	+0.02

Another New Horned sire that we're really proud of. We sold him at the Calgary Bull Sale in 2018 where he was Reserve Champion and purchased by Parkview Farms and Jon MacKenzie, two quality operations. We had used him as a yearling and retained semen for future use. Well, his calves are outstanding with several true herd bull prospects and heifer calves second to none. Jon MacKenzie is reporting the same success. He is breeding like his sire the great Rock Solid 5Z. So far he is the best horned bull we have used for a long time.



## O GH SENSATION DRAFT 239D

**BW: 83 lbs** **GAH 239D** **20/03/2016**  
 UPS SENSATION 3786 ET CHURCHILL SENSATION 028X  
 UPS MISS NEON 7734  
 GH UPTOWN LASS 309B UPS UPTOWN ET  
 FA 179R BRITISHER LADY 57U

CE	BW	WW	YW	MM	TM	REA	IMF
-.04	+4.4	+46.6	+94.3	+34.5	+57.8	+0.22	+0.16

239D was the high selling bull at the 2017 Calgary Bull sale and has lived up to his accomplishment. We purchased 1/2 interest from JK Fraser the following year after we saw his calves. They are my kind. Lots of hair and more pigment than any bull we've used. Mostly horned pedigree as well, modest in frame and excellent feet and legs. His dam is special. You ranchers will love the genetics this guy offers. Maternal pigment, hair, structural soundness and extra easy keeping.





# CHAROLAIS BULLS

I have truly learned to love this breed. These bulls represent what I feel Charolais are meant for. They will add hair, muscle and performance without compromising soundness. This is truly a sound, powerful group. Hope you like them as well as I do.



**Growsafe Ranked Top 15**

**LOT 1A**

There's a reason he's lot #1 in the sale order. If you're looking for power and performance, he's probably the best we've raised. As a group, we love our Copyrights and this guy ranks high in my book. Won the All Breed virtual Bull Calf Champion at Agribition 2020. Can't do that without muscle and power in a classy package. Dam is one of our best, good udder and lots of power. 2 flushmate heifers are among our best. Flushmate sells as Lot B 857H. If you really study these 2, and realize there is almost 2 months difference in age, I am not sure, which is the best.

## 1A GH 714E HARD CORE ET 85H

BW: 110 lbs NHP 85H Jan 14, 2020

CJC TRADEMARK H45  
CML COPYRIGHT 714E ET  
CML PLD WILMA 3S  
RRMM HARD BODY 3D  
TR MR FIRE WATER 5792  
BAR B ANGEL 33U

CE	BW	WW	YW	MM	TM	REA	IMF
2.1	3.4	45	84	23	46	0.51	-0.24
ADG	EFF Index	FEED to GAIN	RFI Index	NHP Rank	NHP Index		
3.25	100	5.80	99	15	100		
BW	WW	205					
110	995	840					

## 1B GH COPYRIGHT HUSKY ET 857H

BW: 97 lbs NHP 857H Feb 26, 2020

CJC TRADEMARK H45  
CML COPYRIGHT 714E ET  
CML PLD WILMA 3S  
RRMM HARD BODY 3D  
TR MR FIRE WATER 5792  
BAR B ANGEL 33U

CE	BW	WW	YW	MM	TM	REA	IMF
1.4	4.6	54	99	21	48	0.58	-0.19
ADG	EFF Index	FEED to GAIN	RFI Index	NHP Rank	NHP Index		
2.89	90	7.42	97	28	91		
BW	WW	205					
97	735	735					

**Ranked 5<sup>th</sup> overall in Growsafe Data**

## 2 GH SILVER AUTHORITY 63H

BW: 96 lbs NHP 63H Jan 12, 2020

LT AUTHORITY 7229 PLD  
LHD CHOTEAU B1669 P  
LT KATY 4273  
BAR B MS SILVER 35Y  
ELDER'S SILVER RAIZEL 977W  
BAR B MISS CHAPS 16J

CE	BW	WW	YW	MM	TM	REA	IMF
7.1	-0.03	31	55	20	36	0.22	-0.11

Good honest calf with great EPDs. Good hair and thickness. Dam is a good one with a top yearling heifer and her first calf 62E was just like this guy. He is working for Chris Ropell. Look at his Growsafe data.

ADG	EFF Index	FEED to GAIN	RFI Index	NHP Rank	NHP Index
3.64	122	5.03	106	5	117

BW	WW	205
96	643	524

Good honest calf with great EPDs. Good hair and thickness. Dam is a good one with a top yearling heifer and her first calf 62E was just like this guy. He is working for Chris Ropell. Look at his Growsafe data.



**LOT 1B**



# CHAROLAIS BULLS



**LOT 3**

**Ranked 3<sup>rd</sup> overall in Growsafe Data**

## **3 GH HERD AUTHORITY ET 790H**

**BW: 98 lbs NHP 790H Feb 25, 2020**

LT AUTHORITY 7229 PLD LHD CHOTEAU B1669 P  
LT KATY 4273

KAYR MISS 441B KAYR VELOCITY 812Z  
KAYR MISS REVEL 219Z

CE	BW	WW	YW	MM	TM	REA	IMF
6.3	-0.5	48	77	25	49	0.31	-0.57

Here's a Herd bull. Dam is a flush cow with sons working at Nish's, Casy Lippa, and we're using 2 of her sons. Maybe my favorite cow. 790H has a top heifer calf as a flushmate. I love our Authority calves and this is why. Lots of hair, length, growth and still classy smooth packages. Look at this guys Growsafe data also. Another reason he is a herd bull. 4.14 average daily gain, and NHP index of 121.

ADG	EFF Index	FEED to GAIN	RFI Index	NHP Rank	NHP Index
4.14	127	4.76	98	3	121

BW	WW	205
98	728	722



**441B, DAM OF LOT 3**

## **4 GH 1D VISION FORWARD 3H**

**BW: 84 lbs NHP 3H Jan 4, 2020**

SHARODON DOUBLE VISION 1D CEDARDALE ZEAL 125Z  
WLM MACKS YASMAN 16Y

RRMM MS FAME 89C LAE MAGIC DRAGON 233Z  
BAR B MS FAME 20W

CE	BW	WW	YW	MM	TM	REA	IMF
8.0	-1.0	41	67	21	41	0.37	-0.28

The only Double Vision son in the sale. Lots of growth and power here and still 84lb birth weight. He could be used as a heifer bull. Dam has a great replacement heifer in our group.

ADG	EFF Index	FEED to GAIN	RFI Index	NHP Rank	NHP Index
3.35	109	6.11	104	20	104

BW	WW	205
84	830	673



**LOT 4**



# CHAROLAIS BULL CALVES



**LOT 5**

## 5 GH AUTHORITY PRINCE 37H

BW: 94 lbs NHP 37H Jan 10, 2020

LT AUTHORITY 7229 PLD LHD CHOTEAU B1669 P  
LT KATY 4273  
RRMM MS PRINCESS 48E RRMM STEEL DRIVER 2C  
RRMM MS PRINCESS 2Y

CE	BW	WW	YW	MM	TM	REA	IMF	BW	WW	205	ADG	EFF Index	FEED to GAIN	RFI Index	NHP Rank	NHP Index
6.2	-0.1	49	83	21	46	0.33	-0.22	94	855	714	4.89	132	4.56	101	1	126

## Ranked #1 in Growsafe Data

Great calf with an outcross pedigree. Good EPDs as well. Dam produced a feature last year the sold to Romerils. This guy is deep, thick and really stout. Just look at this guy's data. 4.89 ADG with F/G index of 132. Wow!



**LOT 6**

## 6 GH COPYRIGHT CLASSIC LAD 45H

BW: 83 lbs NHP 45H Jan 11, 2020

CML COPYRIGHT 714E ET CJC TRADEMARK H45  
CML PLD WILMA 3S  
GH PROVIDENCE CLASSY LASS 148F KAYR PROVIDENCE 910C  
KAYR MISS CLASSIC 339A

CE	BW	WW	YW	MM	TM	REA	IMF
7.1	1.4	53	97	18	45	0.49	0.04

Good heavy bull with excellent testicles. Dam is a beautiful young 2 year old Providence cow. Pretty good job first time out of the gate.

ADG	EFF Index	FEED to GAIN	RFI Index	NHP Rank	NHP Index
2.84	91	7.32	100	27	91

BW	WW	205
83	733	616

## 7 GH AUTHORITY LAD 221H

BW: 88 lbs NHP 221H Jan 18, 2020

LT AUTHORITY 7229 PLD LHD CHOTEAU B1669 P  
LT KATY 4273  
RRMM MS MILES BABY 25D BLKC LEGACY 5Y  
RRMM MILES BABY 14Y

CE	BW	WW	YW	MM	TM	REA	IMF
11.3	-2.7	42	72	20	41	0.23	0.40

This guy is recommended for heifers with -2.7 EPD, top 10% of the breed. Dam has 2 females in the herd. Good growsafe numbers as well.

ADG	EFF Index	FEED to GAIN	RFI Index	NHP Rank	NHP Index
3.64	109	6.1	96	18	104

BW	WW	205
88	764	658



**LOT 7**



# CHAROLAIS BULL CALVES



**LOT 8**

## 8 GH AUTHORITY HERB 161H

BW: 72 lbs NHP 161H Jan 15, 2020

LT AUTHORITY 7229 PLD LHD CHOTEAU B1669 P  
RRMM MILES BABY 14Y LT KATY 4273  
GERRARD KRYPTONITE 40T  
RRMM MILES AIGLONDINO 10L

CE	BW	WW	YW	MM	TM	REA	IMF	BW	WW	205	ADG	EFF Index	FEED to GAIN	RFI Index	NHP Rank	NHP Index
12.7	-5.6	37	64	22	40	0.18	0.04	72	752	641	4.30	121	5.35	96	7	114

Another good Authority calf. This is my kind. Really thick with tons of muscle. Then, he is a true heifer bull. 72 lb birth with a -5.6 EPD. Never have I raised a heifer bull with this kind of power in any breed. Dam's calf last year sold to Jeff Cope as a feature. Really good cow family. Herd bull data from growsafe trial as well. 4.3 ADG and F/G index of 121.

**Ranked 12<sup>th</sup> overall in Growsafe Data**

## 9 GH COPYRIGHT PRO 224H

BW: 94 lbs NHP 224H Jan 18, 2020

CML COPYRIGHT 714E ET CJC TRADEMARK H45  
CML PLD WILMA 3S  
GH PROVIDENCE KAYCEE 191F KAYR PROVIDENCE 910C  
KAYR MISS 100X

CE	BW	WW	YW	MM	TM	REA	IMF
4.4	2.8	58	108	19	48	0.53	-0.05

Lots of growth here. Top 5% of this breed for WW & 10% for YW. Dam is a young Providence heifer. Pretty good calf for a heifer. Great hair and really deep. Top 25% for REA.

ADG	EFF Index	FEED to GAIN	RFI Index	NHP Rank	NHP Index
3.64	118	5.53	106	12	110

BW	WW	205
94	800	688



**LOT 9**

## 10 GH 714E JAZZ LAD 277H

BW: 89 lbs NHP 277H Jan 21, 2020

CML COPYRIGHT 714E ET CJC TRADEMARK H45  
CML PLD WILMA 3S  
GH RIO LADY JAZZ ET 525F LT RIO BLANCO 1234  
FROG HOLLOW JAZZ 132L

CE	BW	WW	YW	MM	TM	REA	IMF
4.4	2.6	54	109	21	48	0.51	0.32

Another 2 year old in the growth department. Top 15% weaning and top 10% yearling REA top 30

ADG	EFF Index	FEED to GAIN	RFI Index	NHP Rank	NHP Index
3.24	104	6.47	101	23	100

BW	WW	205
89	720	627



**LOT 10**



# CHAROLAIS BULL CALVES



**LOT 11**

## 11 GH PROVIDENCE HUNK 297H

BW: 115 lbs NHP 297H Jan 22, 2020

KAYR VELOCITY 812Z  
KAYR MISS 910W  
KAYR PROVIDENCE 910C  
JWX DOMINO 23Z  
KAYR MISS 435B  
KAYR MISS 11Y

This guy fits his name. "Hunk" He's a good one if your looking for pure performance. Calved unassisted, but has lots of power and growth. Top 20% for weaning, 35% yearling and his carcass quality is really high with top 10% REA and still 35% marbling. This guy will make the feedlot guy some money. Great hair and really good disposition. I like this guy. ADG of 3.84 with a F/G index of 107.

CE	BW	WW	YW	MM	TM	REA	IMF	BW	WW	205	ADG	EFF Index	FEED to GAIN	RFI Index	NHP Rank	NHP Index
-2.8	6.0	51	93	22	47	0.62	-0.26	115	827	721	3.84	107	6.28	87	21	102



**LOT 12**

## 12 GH COPYRIGHT LAD 299H

BW: 83 lbs NHP 299H Jan 22, 2020

CML COPYRIGHT 714E ET CJC TRADEMARK H45  
CML PLD WILMA 3S  
GH 1D VISION LIBBY 143F SHARODON DOUBLE VISION 1D  
KAYR MISS LIBBY 628D

CE	BW	WW	YW	MM	TM	REA	IMF
7.0	1.3	48	89	20	44	0.45	0.23

I love these young 2 year olds that can bring calves like this in the first time out. EPD profile that's really nice. Top 30% weaning and everything else at average. Great cow family as well.

ADG	EFF Index	FEED to GAIN	RFI Index	NHP Rank	NHP Index
3.66	112	5.95	100	16	106

BW	WW	205
83	710	621



# CHAROLAIS BULL CALVES



**LOT 13**

## Ranked 8<sup>th</sup> overall in Growsafe Data

### 13 GH PROVIDENCE KEY LAD 341H

BW: 104 lbs NHP 341H Jan 25, 2020

KAYR PROVIDENCE 910C KAYR VELOCITY 812Z  
KAYR MISS 910W  
RRMM MILES KEYA 14Z GERRARD KRYPTONITE 40T  
RRMM MILES KEYA 10U

CE	BW	WW	YW	MM	TM	REA	IMF	BW	WW	205	ADG	EFF Index	FEED to GAIN	RFI Index	NHP Rank	NHP Index
-0.6	3.9	60	106	17	47	0.57	-0.58	104	896	786	3.99	121	5.35	102	8	113

## Terms to be Announced Sale day

This guy is pretty special in my book. I rank him as maybe our top calf. We're planning on him playing a major role in our program down the road. Tons of power and performance. Top 4% in WW and top 10% for YW. REA top 15% as well. Another bull with great hair and style. I really like him from the back as well. Lots of Hind quarter with tons of middle. Remember he's had no creep or feed till mid October. This guy will show next year. Dam has already raised a Herd bull used by Bob Miles and ourselves. ADG 3.99, F/G index of 121.

## Ranked 4<sup>th</sup> overall in Growsafe Data

### 14 GH PROVIDENCE MILES 407H

BW: 89 lbs NHP 407H Jan 25, 2020

KAYR PROVIDENCE 910C KAYR VELOCITY 812Z  
KAYR MISS 910W  
RRMM MILES LADY ONYX 17U MOUNTAIN ROCK 511R  
MILES DINO ONYX GAL 1J

CE	BW	WW	YW	MM	TM	REA	IMF
4.0	0.8	53	90	19	46	0.46	-0.43

Another Providence son with great power and performance and still 89 lb birth weight. Top 15% WW and 40% yearling. Dam is one of our good producers that we got from Bob Miles at Seven Quarter Circle. I really like this guy's depth and power. A great disposition as well. Its pretty exciting to see all our top calves excel in growsafe.

ADG	EFF Index	FEED to GAIN	RFI Index	NHP Rank	NHP Index
4.65	123	5.16	92	4	117

BW	WW	205
89	825	727



**LOT 14**



# CHAROLAIS BULL CALVES



**Ranked 2<sup>nd</sup> overall in Growsafe Data**

**LOT 16**

## 16 GH 350B WHITE HUSTLE 551H

BW: 95 lbs NHP 551H Feb 3, 2020

CTP MR. BAM BAM 350B JWX BUCKLE 1X  
CTP MISS JUNIPER 350Z  
KAYR MISS 809U M6 GRID MAKER 104P ET  
KAYR MISS 624S

CE	BW	WW	YW	MM	TM	REA	IMF
7.8	-0.4	46	89	31	54	0.63	0.36

This guy is bred in the purple and has EPDs to match. Every trait is in the top 45% of the breed except fat. Milk and Maternal top 1% & 2% of the breed. BW still at 35%. This might be why we've flushed his mother. She has 20 calves registered with last years 2 sons selling to Sever Farms and another top 2 year old selling as lot 21.(679G). ADG 4.43, with an impressive F/G index of 132.

BW	WW	205	ADG	EFF Index	FEED to GAIN	RFI Index	NHP Rank	NHP Index
95	790	720	4.43	132	4.61	109	2	123



**LOT 15**

**Ranked 7<sup>th</sup> overall in Growsafe Data**

## 15 GH COPYRIGHT MYSTERY 463H

BW: 98 lbs NHP 463H Jan 31, 2020

CML COPYRIGHT 714E ET CJC TRADEMARK H45  
CML PLD WILMA 3S  
RRMM MONEY PENNY 64E RRMM RRR CANYON 25C  
RRMM MS MONEY PENNY52C

CE	BW	WW	YW	MM	TM	REA	IMF
4.7	2.9	51	96	17	43	N/A	N/A

I call this guy my "Cowboy's kind" of bull. Big, deep soft, with lots of hair. Love his disposition as well. He won't win the goodlooking contest, but his steers will when you hang them up.

ADG	EFF Index	FEED to GAIN	RFI Index	NHP Rank	NHP Index
4.63	126	3.97	106	7	119

BW	WW	205
98	770	694

**Ranked 10<sup>th</sup> overall in Growsafe Data**

## 17 GH 350B GRIDLAD 628H

BW: 88 lbs NHP 628H Feb 10, 2020

CTP MR. BAM BAM 350B JWX BUCKLE 1X  
CTP MISS JUNIPER 350Z  
KAYR MISS GRID 416B M6 GRID MAKER 104P ET  
KAYR MISS FUSION 759L

CE	BW	WW	YW	MM	TM	REA	IMF
7.7	-0.8	39	81	26	46	0.60	0.71

Another calf with a great EPD profile. Starting with BW in the top 25% of the breed and Milk top 10%. Carcass is where he really excels with REA top 10%, marbling 15% and Fat top 25%. Dam's bull in last year's sale sold to Visser's of Raymond.

ADG	EFF Index	FEED to GAIN	RFI Index	NHP Rank	NHP Index
4.06	117	5.58	99	10	112

BW	WW	205
88	685	640



**LOT 17**



# CHAROLAIS BULL CALVES



Ranked 6<sup>th</sup> overall in Growsafe Data

LOT 19

## 19 GH 910C PROVIDENCE LAD 730H

BW: 85 lbs NHP 730H Jan 16, 2020

KAYR PROVIDENCE 910C KAYR VELOCITY 812Z  
KAYR MISS 910W  
KAYR MISS IMPRESSION 640D JWX DOMINO 23Z  
KAYR MISS 802U

The youngest calf and he's a good one with tons of hair and style. Yep, he's a Providence. Dam is a good young cow. Her only other bull was our feature high selling 2 year old last year to Blair Land and Cattle. Don't discount this guy for his age. Almost 2 month younger than some. F/G index of 125

CE	BW	WW	YW	MM	TM	REA	IMF	BW	WW	205	ADG	EFF Index	FEED to GAIN	RFI Index	NHP Rank	NHP Index
3.5	1.1	48	81	20	44	0.53	-0.43	85	780	748	3.97	125	5.08	108	6	116

## 18 GH PROVIDENCE LAD 588H

BW: 84 lbs NHP 588H Feb 6, 2020

KAYR PROVIDENCE 910C KAYR VELOCITY 812Z  
KAYR MISS 910W  
RRMM RRR ELVIRA 67D BLKC LEGACY 5Y  
BAR B JAZZY 5X

CE	BW	WW	YW	MM	TM	REA	IMF
7.2	-0.6	48	83	20	44	0.36	0.01

Another great Providence son. They are our best overall group this year. This guy has great hair and maybe has the biggest loin and hip of any. Dam is a good young cow with a great udder. Her first son sold to our neighbor, Eileen Juhasz

ADG	EFF Index	FEED to GAIN	RFI Index	NHP Rank	NHP Index
3.59	108	6.18	98	19	104

BW	WW	205
84	675	616



LOT 18



# CHAROLAIS 2 YEAR OLD BULLS



**LOT 21**

## 21 GH 714E GAME PLAN ET 679G

BW: 98 lbs NHP 679G Feb 23, 2020

CML COPYRIGHT 714E ET CJC TRADEMARK H45  
CML PLD WILMA 3S  
KAYR MISS 809U M6 GRID MAKER 104P ET  
KAYR MISS 802U

CE	BW	WW	YW	MM	TM	REA	IMF
6.5	1.8	50	87	19	41	0.51	0.41

I really like this guy. His picture doesn't do him justice. But when you get behind this guy, you just say Wow. He's so long and smooth and doesn't appear to have the power he does. That's why he's our heaviest bull by alot. This ones a Herd Bull by all accounts. His flushmate sold last year to Sever Farms. Both this guy and his Flushmate were class winners at Agribition last year. 679G's EPD profile also rank him in the herd bull category. All EPDs are in the top 40% except birth and fat. Milk and maternal top 10 & 15% with weaning & yearling top 25%. Marbling and REA also both top 30. Just a really good bull in all aspects.

BW	WW	205	YW	LMY	BK Fat	IMF score	REA in <sup>2</sup>	REA/100#
98	920	966	1430	70.89	2.92	AA+	18.61	1.00



**GH 714E GAME PLAN ET 679G**

Flushmates to Lot 21 Both were class winners at Agribition.



**GH COPYRIGHT GATSBY ET 107G**

Last year's high selling bull to Bobby Joe Sever.



# CHAROLAIS 2 YEAR OLD BULLS



**LOT 22**

## 22 GH 350B BAM BAM LAD 1275G

BW: 80 lbs NHP 1275G May 10, 2019

CTP MR. BAM BAM 350B JWX BUCKLE 1X  
CTP MISS JUNIPER 350Z  
KAYR MISS LIBBY 627D KAYR LIBERTY 127A  
KAYR LIBERTY 346A

CE	BW	WW	YW	MM	TM	REA	IMF
5.7	0.6	43	84	27	48	0.63	0.28

It's pretty exciting to be able to start this section with 2 bulls like this guy and lot 21. 1275G has hair, style and depth of body like no other. Don't forget he was born in May, 5 months younger than some. I really like this guy. EPD profile is also outstanding with every category in the top 60% and only 3 not in the top 45%. Milk and REA both in the top 10%.

BW	WW	205	YW	LMY	BK Fat	IMF score	REA in <sup>2</sup>	REA/100#
80	561	862	1022	67.19	2.92	AA	14.06	1.00

## 24 GH PROVIDENCE GAMER 188G

BW: 83 lbs NHP 188G Jan 30, 2019

KAYR PROVIDENCE 910C KAYR VELOCITY 812Z  
KAYR MISS 910W  
KAYR MISS 110X ROLLING D CLASSIC 878U  
KAYR MISS 611S

CE	BW	WW	YW	MM	TM	REA	IMF
4.6	0.3	46	76	16	39	0.41	-0.47

Great cow family here. Dam is 11 years old and registered 9 calves all born Jan or first week in Feb. Lots of fertility here. Had good ultrasound and with a high LMY 68.34

BW	WW	205	YW	LMY	BK Fat	IMF score	REA in <sup>2</sup>	REA/100#
83	616	585	1059	68.34	2.46	AA-	14.89	1.02
ADG	EFF Index	FEED to GAIN	RFI Index	NHP Rank	NHP Index			
3.48	79	8.07	83	52	85			

## 23 GH COPYRIGHT CLASSIC 179G

BW: 98 lbs NHP 179G Jan 29, 2019

CML COPYRIGHT 714E ET CJC TRADEMARK H45  
CML PLD WILMA 3S  
KAYR MISS CLASSIC 215Z ROLLING D CLASSIC 878U  
KAYR MISS FUSION 759L

CE	BW	WW	YW	MM	TM	REA	IMF
5.7	4.0	52	96	13	39	0.53	0.20

This guy is designed to produce cattle for the feedlot. Top 20 & 25% for weaning & yearling plus top 25% for both REA & Fat. Great ultrasound as well. Big Rib-eye and huge LMY. Had a RFI index of 101.

BW	WW	205	YW	LMY	BK Fat	IMF score	REA in <sup>2</sup>	REA/100#
98	739	698	1338	69.23	2.86	A+	16.49	1.12
ADG	EFF Index	FEED to GAIN	RFI Index	NHP Rank	NHP Index			
2.76	92	5.70	101	44	92			

## 25 GH 20D ANGLE 372G

BW: 98 lbs NHP 372G Feb 10, 2019

RRMM DAGGER 20D EC BRONSON 204  
RRMM MINI PEARL 13Z  
BLP ANGIE 1A GID MOUNTAIN MAN 9X  
BLP ROXANNE 4R

CE	BW	WW	YW	MM	TM	REA	IMF
2.8	1.5	33	73	26	43	0.47	-0.32

Here's one with consistent # across the board. Good F/G 5.26 and ADG 3.37. Great milk in the top 15% and REA top 25%, but his own ultrasound data is a huge REA of almost 18" and 1.22/100lbs.

BW	WW	205	YW	LMY	BK Fat	IMF score	REA in <sup>2</sup>	REA/100#
98	709	703	1312	70.23	2.86	A+	17.72	1.22
ADG	EFF Index	FEED to GAIN	RFI Index	NHP Rank	NHP Index			
3.37	100	5.26	95	33	98			



# CHAROLAIS 2 YEAR OLD BULLS



**LOT 26**

## 26 GH WRANGLER MILES 337G

BW: 89 lbs NHP 337G Feb 7, 2019

WR WRANGLER W601 CMF 192 WRANGLER 256  
WR MISS PRINCESS T629  
RRMM MS ONYX 66E RRMM RRR CANYON 25C  
RRMM MS ONYX 20C

CE	BW	WW	YW	MM	TM	REA	IMF
9.7	-1.3	53	90	20	47	0.38	0.26

Here another one with a huge REA of 18" and LMY of 70.45. Good RFI # with 103 index. Heifer's first calf with good EPDs, birth in the top 20% and WW and milk top 15%. This guy is really thick. One of the top 2 year olds.

BW	WW	205	YW	LMY	BK Fat	IMF score	REA in <sup>2</sup>	REA/100#
89	638	625	1098	70.45	3.90	AA-	17.99	1.20
ADG	EFF Index	FEED to GAIN	RFI Index	NHP Rank	NHP Index			
3.53	100	6.68	103	32	100			



**LOT 28**

## 27 GH WRANGLER VARIETY 502G

BW: 83 lbs NHP 502G Feb 15, 2019

WR WRANGLER W601 CMF 192 WRANGLER 256  
WR MISS PRINCESS T629  
RRMM MS LADY ONYX 17E MERIT ROUNDUP 9508W  
RRMM MILES LADY ONYX 15W

CE	BW	WW	YW	MM	TM	REA	IMF
11.6	-2.4	51	91	18	44	0.10	0.08

Great marbling and huge REA of 18" and LMY of 70.41. Really good growsafe data as well with ADG of 3.55 F/G of 4.65, 112% and RFI of 105, NHP index 107. Another 2 year old's first calf, recommended for heifers with a top 10% BW EPD and 10% CE. He still ranks 20% for weaning for 40% for yearling.

BW	WW	205	YW	LMY	BK Fat	IMF score	REA in <sup>2</sup>	REA/100#
83	676	684	1314	70.41	2.86	AA+	17.95	1.15
ADG	EFF Index	FEED to GAIN	RFI Index	NHP Rank	NHP Index			
3.55	112	4.65	105	13	107			

## 28 GH DAGGER BOND 509G

BW: 89 lbs NHP 509G Feb 16, 2019

RRMM DAGGER 20D EC BRONSON 204  
RRMM MINI PEARL 13Z  
BAR B MISS BOND 48W JDF RIPTIDE 59S  
BAR B JADE 9N

CE	BW	WW	YW	MM	TM	REA	IMF
6.3	0.4	33	70	24	41	0.43	-0.35

Here's a 2 year old with lots of growth. Good ultrasound data with a 68.72 LMY. Did above average also in growsafe with 3.35 ADG & 5.02 F/G, 105 index & NHP index of 102. Good hair as well an really smooth. 2 year old's first calf.

BW	WW	205	YW	LMY	BK Fat	IMF score	REA in <sup>2</sup>	REA/100#
89	649	660	1378	68.72	3.10	AA	16.16	1.02
ADG	EFF Index	FEED to GAIN	RFI Index	NHP Rank	NHP Index			
3.35	105	5.02	103	23	102			



# CHAROLAIS 2 YEAR OLD BULLS



**LOT 29**

This guy shows alot of muscle, both in real and on paper. LMY of 69.96 Nice growsafe data with ADG of 3.48, 103 index 5.02 F/G, 105 index & NHP index of 103 index. Lots of performance with a weaning top 40% and yearling top 10% REA, 5% Good EPDs

## 29 GH COPYRIGHT DOMINO 705G

BW: 95 lbs NHP 705G Feb 25, 2019

CML COPYRIGHT 714E ET CJC TRADEMARK H45  
CML PLD WILMA 3S  
GH 23X DOMINO MISS KAY 714E JWX DOMINO 23Z  
KAYR MISS CLASSIC 327A

CE	BW	WW	YW	MM	TM	REA	IMF	
-2.3	5.7	59	106	16	46	0.66	0.03	
BW	WW	205	YW	LMY	BK Fat	IMF score	REA in <sup>2</sup>	REA/100#
95	702	743	1446	69.96	3.70	AA-	16.88	1.08
ADG	EFF Index	FEED to GAIN	RFI Index	NHP Rank	NHP Index			
3.48	105	5.02	100	20	103			

## 30 GH PROVIDENCE GUILD 456G

BW: 85 lbs NHP 456G Feb 12, 2019

KAYR PROVIDENCE 910C KAYR VELOCITY 812Z  
KAYR MISS 910W  
KAYR MISS 109X SPARROWS SANCHEZ 715T  
KAYR MS FUSION 407H

CE	BW	WW	YW	MM	TM	REA	IMF
3.3	0.5	35	63	19	37	0.30	-0.62

Dam has a weaned 8 good calves in a row. Ultrasound AA marbling and LMY of 68.36, top 40% for BW as well.

BW	WW	205	YW	LMY	BK Fat	IMF score	REA in <sup>2</sup>	REA/100#
85	713	713	1418	68.36	3.33	AA	16.02	1.04

## 31 GH SOUTHERN COPYRIGHT 569G

BW: 77 lbs NHP 569G Feb 20, 2019

CML COPYRIGHT 714E ET CJC TRADEMARK H45  
CML PLD WILMA 3S  
RRMM RRR SOUTHERN BELL 60E BLKC LEGACY 5Y  
BAR B LADY 53W

CE	BW	WW	YW	MM	TM	REA	IMF
9.2	0.0	50	91	18	43	0.40	0.42

A Copyright recommended for heifers. 77 birth and top 35% on BW EPD, but still top 25% for WW 35% for YW. AA marbling with 68.03 LMY 2 year old's first calf.

BW	WW	205	YW	LMY	BK Fat	IMF score	REA in <sup>2</sup>	REA/100#
77	675	698	1330	68.03	3.81	AA	16.21	1.03
ADG	EFF Index	FEED to GAIN	RFI Index	NHP Rank	NHP Index			
2.58	87	5.96	99	50	87			

**Ranked 12<sup>th</sup> overall in Growsafe Data**

## 32 GH COPYRIGHT DOMINO 708G

BW: 83 lbs NHP 708G Feb 25, 2019

CML COPYRIGHT 714E ET CJC TRADEMARK H45  
CML PLD WILMA 3S  
GH 23Z DOMINO TWINETTE 743E JWX DOMINO 23Z  
KAYR MISS CLASSIC 334A

CE	BW	WW	YW	MM	TM	REA	IMF
2.1	2.9	51	95	18	44	0.57	0.16

Another Copyright out of a 2 year old heifer with weaning in the top 20% and yearling top 25%. REA top 15% as well. His actual Ultrasound data also shows a big REA of almost 17" and still AA marbling. Growsafe data also good with ADG 4.23

BW	WW	205	YW	LMY	BK Fat	IMF score	REA in <sup>2</sup>	REA/100#
83	581	613	1224	69.90	2.38	AA	16.71	1.10
ADG	EFF Index	FEED to GAIN	RFI Index	NHP Rank	NHP Index			
4.23	105	6.30	103	12	108			



**LOT 32**



# CHAROLAIS 2 YEAR OLD BULLS



**LOT 33**

Good bull here with lots of muscle, thickness and performance. LMY of 69.31 Great growsafe data with a 3.68 ADG, F/G 4.72, 111 index and NHP index of 106

## 33 GH COPYRIGHT ONWARD 820G

BW: 89 lbs NHP 820G Mar 6, 2019

CML COPYRIGHT 714E ET CJC TRADEMARK H45  
CML PLD WILMA 3S  
RRMM MILES LADY ONYX 21Z GERRARD KRYPTONITE 40T  
MILES DINO ONYX GAL 1J

CE	BW	WW	YW	MM	TM	REA	IMF	
6.3	1.2	47	88	17	41	0.40	-0.04	
BW	WW	205	YW	LMY	BK Fat	IMF score	REA in <sup>2</sup>	REA/100#
89	665	732	1250	69.31	2.46	A++	16.09	1.07
ADG	EFF Index	FEED to GAIN	RFI Index	NHP Rank	NHP Index			
3.68	111	4.72	100	16	106			

## Ranked 2<sup>nd</sup> overall in Growsafe Data

## 34 GH COPYRIGHT NUGGET 825G

BW: 75 lbs NHP 825G Mar 7, 2019

CML COPYRIGHT 714E ET CJC TRADEMARK H45  
CML PLD WILMA 3S  
RRMM RRR NUGGET 94D BLKC LEGACY 5Y  
BAR B MISS BOND 82T

## 36 GH 506E MAVERICK DOMINO 882G

BW: 89 lbs NHP 882G Mar 12, 2019

KAYR MAVERICK 506E KAYR PATENT 748B  
HC WINDY RIVER 506C  
GH DOMINO 23Z MISS KAY 729E JWX DOMINO 23Z  
KAYR MISS 704T

CE	BW	WW	YW	MM	TM	REA	IMF
3.3	3.0	43	69	23	44	0.46	-0.70

Strong athletic bull with good hair coat. Dam is a 2 year old heifer. Really good Ultrasound data with a AAA marbling. Nice growsafe data with an NHP index of 100

BW	WW	205	YW	LMY	BK Fat	IMF score	REA in <sup>2</sup>	REA/100#
89	672	762	1022	66.63	2.92	AA+	13.37	0.96
ADG	EFF Index	FEED to GAIN	RFI Index	NHP Rank	NHP Index			
3.70	102	6.52	100	29	101			



**LOT 36**

CE	BW	WW	YW	MM	TM	REA	IMF
5.8	2.1	55	101	19	47	0.49	0.44

Twin Copyright son with good growth numbers and top 10% for WW and 15% YW. REA and marbling both top 30%. AA++ of his own marbling Ultrasound. Great growsafe numbers with a top ADG of 4.81, 130 index & 116 NHP index Ranked #2

BW	WW	205	YW	LMY	BK Fat	IMF score	REA in <sup>2</sup>	REA/100#
75	569	628	1013	67.51	3.81	AA+	15.58	1.07
ADG	EFF Index	FEED to GAIN	RFI Index	NHP Rank	NHP Index			
4.81	116	5.60	101	2	116			

## 35 GH COPYRIGHT FANATIC 874G

BW: 98 lbs NHP 874G Mar 11, 2019

CML COPYRIGHT 714E ET CJC TRADEMARK H45  
CML PLD WILMA 3S  
BAR B FANCY 51Y ELDER'S WEBSTER 914W  
BAR B MISS A JAY 17U

CE	BW	WW	YW	MM	TM	REA	IMF
3.9	2.9	52	101	20	46	0.54	0.14

I love my Copyright calves for there performance. Top 15% & 20% for weaning and yearling growth. Top 20% for REA as well. This guy's Ultrasound data show lot of marbling and a nice F/G of 5.23.

BW	WW	205	YW	LMY	BK Fat	IMF score	REA in <sup>2</sup>	REA/100#
98	713	805	1234	69.11	2.46	AA+	15.84	1.02
ADG	EFF Index	FEED to GAIN	RFI Index	NHP Rank	NHP Index			
2.98	101	5.23	105	35	98			



# CHAROLAIS 2 YEAR OLD BULLS



**LOT 37**

One of the top bulls in the sale with a great hair coat and great Ultrasound data AAA marbling with a top 20% marbling EPD as well, where he really shines is REA with a 18.50" ribeye. This is our carcass bull. Then growsafe ADG of 4.30, 113 index. 6.99 F/G with a NHP index of 101.

## 38 GH COPYRIGHT PENDULUM 886G

BW: 98 lbs NHP 886G Mar 12, 2019

CML COPYRIGHT 714E ET CJC TRADEMARK H45  
CML PLD WILMA 3S  
RRMM MONEY PENNY 17X GERRARD KRYPTONITE 40T  
RRMM MS MONEYPENNY 14N

CE	BW	WW	YW	MM	TM	REA	IMF
3.8	2.6	44	87	19	41	0.46	-0.01

Another copyright. This guy has great feet out of a nice uddered cow.

BW	WW	205	YW	LMY	BK Fat	IMF score	REA in <sup>2</sup>	REA/100#
98	617	699	1198	68.76	2.46	A++	15.41	1.02
ADG	EFF Index	FEED to GAIN	RFI Index	NHP Rank	NHP Index			
2.65	92	5.68	97	46	89			

## 39 GH WINDY HOT SHOT 1041G

BW: 98 lbs NHP 1041G Apr 13, 2019

RRMM HOT SHOT 1D LT LEDGER 0332  
RRMM MS KEYA 3X  
HC WINDY RIVER 506C KCM ULTIMATE 144Y  
HC WINDY RIVER 290Z

CE	BW	WW	YW	MM	TM	REA	IMF
1.9	3.6	38	67	24	43	0.32	-0.15

Young bull with good hair and big REA/100lbs 1.14 & LMY of 68.54. Son of our Flush cow 506 that came Hunter Charolais. Perfect udder with top 20% milk EPD. This guy will raise females.

BW	WW	205	YW	LMY	BK Fat	IMF score	REA in <sup>2</sup>	REA/100#
98	565	757	1013	68.54	2.38	A+	15.05	1.14

## 37 GH 210 DOMINO ONYX 1027G

BW: 95 lbs NHP 1027G Mar 12, 2019

KAYR DOMINO 210D KAYR LIBERTY 127A  
KAYR GOTTA HAVE 210Z  
RRMM MS ONYX 20C BLKC LEGACY 5Y  
RRMM MILES LADY ONYX 15X

CE	BW	WW	YW	MM	TM	REA	IMF	
6.6	1.8	41	82	19	39	0.46	0.59	
BW	WW	205	YW	LMY	BK Fat	IMF score	REA in <sup>2</sup>	REA/100#
95	725	977	1148	68.36	5.27	AAA	18.46	1.06
ADG	EFF index	FEED to GAIN	RFI index	NHP Rank	NHP Index			
4.30	97	6.99	92	30	101			



**LOT 39**



# CHAROLAIS 2 YEAR OLD BULLS



**LOT 40**

## 40 GH 210D MR. DOMINO 1110G

BW: 89 lbs NHP 1110G Apr 19, 2019

KAYR DOMINO 210D KAYR LIBERTY 127A  
KAYR GOTTA HAVE 210Z  
KAYR MISS 517C TR PZC MR. TURTON 0794 ET  
KAYR MISS 127X

CE	BW	WW	YW	MM	TM	REA	IMF
6.1	1.6	41	81	22	43	0.55	-0.08

One of my picks of all the 2 year old bulls. Big deep and thick with really good hair. He also excels on paper. ADG of 4lbs and NHP index of 100. He has a huge 18" ribeye and 69.85 LMY. Her only other son sold as a feature in last year's sale to Gerald

BW	WW	205	YW	LMY	BK Fat	IMF score	REA in <sup>2</sup>	REA/100#
89	526	728	1036	69.85	3.33	A++	17.86	1.18
ADG	EFF Index	FEED to GAIN	RFI Index	NHP Rank	NHP Index			
3.99	103	6.57	97	25	102			



**LOT 41**

## 41 GH PROVIDENCE MILES 1135G

BW: 89 lbs NHP 1135G Apr 23, 2019

KAYR PROVIDENCE 910C KAYR VELOCITY 812Z  
KAYR MISS 910W  
RRMM MILES PRINCESS 34C BLKC LEGACY 5Y  
RRMM MS PRINCESS 2Y

CE	BW	WW	YW	MM	TM	REA	IMF
5.1	1.5	48	83	18	42	0.39	-0.09

A really young, almost May bull that shows good thickness. Ultrasound data shows good marbling of AA++ and LMY of 66.94.

BW	WW	205	YW	LMY	BK Fat	IMF score	REA in <sup>2</sup>	REA/100#
89	605	867	916	66.94	2.86	AA+	13.68	1.01
ADG	EFF Index	FEED to GAIN	RFI Index	NHP Rank	NHP Index			
3.90	107	6.32	95	26	102			



# ANGUS BULL CALVES

We have been producing Angus bulls longer than many of our breeders. My Dad started in the early 70's and we've followed ever since. We're especially excited about this group and the different sires they represent. Our President calves are everything we've hoped for. All angus bulls were ranked in growsafe, out of 64 bulls.



LOT 42

Flushmate to Lot 45. Its hard to believe this guy started life at only 78lbs. He's one of the top calves we've raised. Big, Stout, heavy muscled calf with good hair. Dam is our top Angus cow with a perfect udder. You will see a lot more from this cow down the road. Great growsafe data. ADG of 4.3, F/G index 120.

**Ranked 13<sup>th</sup> overall in Growsafe Data**

## Ranked 6<sup>th</sup> overall in Growsafe Data

### 43 GH COMMERCIAL ARSENAL 5H

BW: 76 lbs NHP 5H Jan 4, 2020

CONNEALY ARSENAL 2174 CONNEALY PACKER 547  
BLACK RICE OF CONANGA 9529  
COMM ANGUS COW 11F N/A  
N/A

CE	BW	WW	YW	MM	TM	REA	IMF
N/A							

Sells NON-PAPERED The only Arsenal calf in the sale out of a non-papered cow 11F. She's been a good producer. This will be a good buy. Recommended for heifers and when you go to wean, you will still have some pounds to sell. ADG 4.4, F/G index of 120.

ADG	EFF Index	FEED to GAIN	RFI Index	NHP Rank	NHP Index
4.41	130	4.10	104	6	121
BW	WW	205			
76	786	676			

### 44 GH COMMERCIAL CRANK 102H

BW: 80 lbs NHP 102H Jan 9, 2020

DMM CRANK 13E 74-51 SUDDEN LOOK 1023  
DMM MISS ESSENCE 14Y  
COMM ANGUS 440D N/A  
N/A

CE	BW	WW	YW	MM	TM	REA	IMF
N/A							

Sells NON-PAPERED Recommended for heifers. Another non-papered cow with a great track record. Good udder and lots of mile. This guy is a Crank that possesses his sire's length power and disposition. Our Crank's are really quiet.

ADG	EFF Index	FEED to GAIN	RFI Index	NHP Rank	NHP Index
3.70	107	5.47	96	22	104
BW	WW	205			
80	680	600			

## 42 GH PRESIDENT AGENT ET 99H

BW: 78 lbs NHP 99H Jan 5, 2020

SAV PRESIDENT 6847 COLEMAN CHARLO 0256  
SAV BLACKCAP MAY 4136  
GH 110R COVER ROSE 63E GH COVERBOY ERIC 110R  
GH ADAMS THUNDER ROSE 118W

CE	BW	WW	YW	MM	TM	REA	IMF
2.0	3.7	64	108	21	53		
ADG	EFF Index	FEED to GAIN	RFI Index	NHP Rank	NHP Index		
4.30	120	4.67	84	13	110		
BW	WW	205					
78	842	726					



LOT 43



# ANGUS BULL CALVES



**LOT 45**

## 45 GH PRESIDENT CHAIRMAN ET 69H

BW: 84 lbs

NHP 69H

Jan 12, 2020

SAV PRESIDENT 6847 COLEMAN CHARLO 0256  
SAV BLACKCAP MAY 4136

GH 110R COVER ROSE 63E GH COVERBOY ERIC 110R  
GH ADAMS THUNDER ROSE 118W

CE	BW	WW	YW	MM	TM	REA	IMF	BW	WW	205	ADG	EFF Index	FEED to GAIN	RFI Index	NHP Rank	NHP Index
2.0	3.7	64	108	21	53			84	812	718	4.17	124	4.43	98	8	115

**Ranked 8<sup>th</sup> overall in Growsafe Data**

**Flushmate to Lot 42** Another calf bred as good as we can breed one. His sire, President is one of the top performance bulls in the breed. All growsafe and Ultrasound data will be available sale day. Don't have many cows I like better than 63E. ADG 4.17, F/G index 124



**LOT 46**

## 46 GH COMMERCIAL CRANK 370H

BW: 98 lbs

NHP 370H

Jan 26, 2020

DMM CRANK 13E 74-51 SUDDEN LOOK 1023  
DMM MISS ESSENCE 14Y

COMM ANGUS 391D N/A  
N/A

CE	BW	WW	YW	MM	TM	REA	IMF
N/A							

**Sells NON-PAPERED** This is one of my favourites. Big, deep bodied calf with great hair. Another Crank out of one of Jimmy's top non-papered Angus cows Another one that will make someone alot of money.

ADG	EFF Index	FEED to GAIN	RFI Index	NHP Rank	NHP Index
2.73	85	6.74	97	51	86
BW	WW	205			
98	700	654			

## 47 GH ENHANCE BLK HUFF 400H

BW: 105 lbs

NHP 400H

Jan 31, 2020

SYDGEN ENHANCE SYDGEN EXCEED 3223  
SYDGEN RITA 2618

GH 385Z BLACK LADY 3B PEAK DOT BOLD 385Z  
BLACK WOLF PALOMA LADY 411P

CE	BW	WW	YW	MM	TM	REA	IMF
-4.0	4.8	51	108	19	40		

An Enhance son who's maternal grandsire is our Peak Dot female producing bull. This is the 3rd sale calf that 3B has raised. One in Colorado and one in Mexico.

ADG	EFF Index	FEED to GAIN	RFI Index	NHP Rank	NHP Index
3.48	100	5.88	94	35	99
BW	WW	205			
105	617	588			



**LOT 47**



# ANGUS BULL CALVES



**Ranked 15/64 overall in Growsafe Data**

## **49 GH IMPRESSION HIGH HILLS 379H**

BW: 98 lbs NHP 379H Jan 28, 2020  
 MAF FIRST IMPRESSION 4420 DAMERON FIRST IMPRESSION 4420  
 MAF MISS JETSTREAM 2928  
 TWIN HILLS DELIA INA 155X GH ADAMS WALLSTREET 1U  
 TWIN HILLS DELIA INA 366T

CE	BW	WW	YW	MM	TM	REA	IMF
9.00	0.0	42	74	23	45		

This guy shows the muscle and smoothness of his daddy. Recommended for heifers. Dam has been a great one with a good udder and loads of milk. ADG 3.9, F/G index 111.

ADG	EFF Index	FEED to GAIN	RFI Index	NHP Rank	NHP Index
3.90	111	5.20	101	15	109

BW	WW	205
80	623	585

## **48 GH ENHANCE GRIZZLY LAD 365H**

BW: 89 lbs NHP 365H Jan 25, 2020  
 SYDGEN ENHANCE SYDGEN EXCEED 3223  
 SYDGEN RITA 2618  
 GH 124Z ROSE 25C U2 GRIZ 124Z  
 GH NEUTRON ROSE 104S

CE	BW	WW	YW	MM	TM	REA	IMF
5.0	1.4	48	90	21	45		

A deep, soft calf with a great hair coat. Another Enhance son out of our Top Rose family. Great udders and tons of milk. This is also her 3rd son to sell.

ADG	EFF Index	FEED to GAIN	RFI Index	NHP Rank	NHP Index
2.98	90	6.46	98	47	91

BW	WW	205
89	665	619





# ANGUS 2 YEAR OLD BULLS

One of our best two year old groups ever. These bulls have outstanding feet and legs. Ran on grass, with no extra feed until early November.



Bulls like this are why I really like our Crank Bull. Big, deep and really easy fleshing. Dam is one of our very best. Her 2020 calf is on tap to use this spring. 287G is not only one of our top bulls phenotypically, but also on paper. Through growsafe, he had an ADG of 3.66, index 115, 5.5 F/G index 104 and NHP index of 106. Ultrasound AAA marbling.

## 50 GH CRANK GENERATION 287G

BW: 105 lbs NHP 287G Feb 7, 2019

DMM CRANK 13E 74-51 SUDDEN LOOK 1023

GH 124Z TRUE ROSE 46B U2 GRIZ 124Z

GH 124Z TRUE ROSE 46B GH TRUE ROSE 12M

CH FRESH ROSE ITEM								
CE	BW	WW	YW	MM	TM	REA	IMF	
-8.0	7.1	53	97	23	50			
BW	WW	205	YW	LMY	BK Fat	IMF score	REA in <sup>2</sup>	REA/100#
105	688	674	1633	68.22	3.86	AAA+	16.51	0.86
ADG	EFF Index	FEED to GAIN	RFI Index	NHP Rank	NHP Index			
3.66	104	5.55	100	30	106			

## 51 GH 110R COVERBOY ERIC 318G

BW: 83 lbs NHP 318G Feb 6, 2019

GH 110R COVER ERIC 4B GH COVERBOY ERIC 110R

GH 110R COVER ERIC 4B GH ADAMS 118R ERICA 31T

GH UPSHOT ERICA 39D EXAR UPSHOT 0562B

GH UPSHOT ERICA 39D GH ADAMS 513S ERICA 227W

CE	BW	WW	YW	MM	TM	REA	IMF	
5	1.8	24	51	21	33			
Recommended as a heifer bull. This is a solid pedigreed bull. He is out of a the great Erica cow family. She is a consistent producer year after year. Sister is also in the herd.								
BW	WW	205	YW	LMY	BK Fat	IMF score	REA in <sup>2</sup>	REA/100#
83	597	583	1215	65.06	5.24	AA+	14.35	0.95

Recommended as a heifer bull. This is a solid pedigreed bull. He is out of a the great Erica cow family. She is a consistent producer year after year. Sister is also in the herd.





# ANGUS 2 YEAR OLD BULLS



**LOT 52**

Big, thick power bull and still could be a heifer bull. 0.7 birth EPD and only 82 actual birth weight. Ultrasound data was pretty impressive as well. AAA++ marbling and still 16" REA and 67.39 LMY. Dam only has one other son working at Rocky Hills cattle.

## 52 GH 29C CROSSFIRE GROUNDER 648G

BW: 82 lbs NHP 648G Mar 9, 2019

BAR-H CROSSFIRE 29C BAR-H CROSSFIRE 63A  
BAR-H ECHO 97A  
GH WW SEQUEL 35S  
HF JUNE 122M

GH ADAMS SEQUEL JUNE 198X

CE	BW	WW	YW	MM	TM	REA	IMF
4.00	0.7	38	62	20	34		

## 53 GH COMMERCIAL CRANK LAD 262G

BW: 100 lbs NHP 262G Jan 31, 2019

DMM CRANK 13E 74-51 SUDDEN LOOK 1023  
DMM MISS ESSENCE 14Y  
COMM ANGUS 2523 N/A  
N/A

CE	BW	WW	YW	MM	TM	REA	IMF
N/A							

Sells NON-PAPERED Here is a Crank son out of an outstanding Angus Cow 2523. She is non-papered, but has been a great producer. Great udder and really easy fleshing.

BW	WW	205	YW	LMY	BK Fat	IMF score	REA in <sup>2</sup>	REA/100#
100	580	553	1596	66.91	4.29	AA	15.43	0.88

## 54 GH RESOURCE ERIC 293G

BW: 82 lbs NHP 293G Feb 9, 2019

SAV RESOURCE 1441 RITO 707 OF IDEAL 3407  
SAV BLACKCAP MAY 4136  
GH 385Z PEAK ERICA 62B PEAK DOT BOLD 385Z  
GH ADAMS 35S ERICA SOURCE 125X

CE	BW	WW	YW	MM	TM	REA	IMF
5.0	1.6	36	77	12	30		

Here is a Resource son that checks most of the boxes. Could be used on heifers and has nice Ultrasound data with AAA- marbling and LMY 66.72. Growsafe data is even more impressive ADG of 3.9 F/G index 112 and RFI index 109 with NHP ranking of 107

BW	WW	205	YW	LMY	BK Fat	IMF score	REA in <sup>2</sup>	REA/100#
81	588	581	1490	66.72	4.29	AAA-	15.19	0.94

ADG	EFF Index	FEED to GAIN	RFI Index	NHP Rank	NHP Index
3.90	112	6.21	109	26	107

BW	WW	205	YW	LMY	BK Fat	IMF score	REA in <sup>2</sup>	REA/100#
82	601	670	1260	67.39	3.86	AAA++	15.48	1.01

ADG	EFF Index	FEED to GAIN	RFI Index	NHP Rank	NHP Index
2.80	54	7.26	79	95	70

## 55 GH IMPRESSION SIR ERIC 396G

BW: 84 lbs NHP 396G Feb 11, 2019

MAF FIRST IMPRESSION 4420 DAMERON FIRST IMPRESSION 4420  
MAF MISS JETSTREAM 2928  
GH 814A ALTITUDE 57C  
GH BLACK ERICA 191E GH JUBILEE ERICA 46Y

CE	BW	WW	YW	MM	TM	REA	IMF
3.0	2.3	52	88	24	50		

Another bull excelling in Growsafe with a 5.26 F/G index of 109, RFI index of 104 and NHP ranking of 103. A great milking Erica daughter and 4420 secures the maternal in this guy.

BW	WW	205	YW	LMY	BK Fat	IMF score	REA in <sup>2</sup>	REA/100#
84	588	585	1394	64.92	3.81	AAA-	12.39	0.88

ADG	EFF Index	FEED to GAIN	RFI Index	NHP Rank	NHP Index
3.06	109	5.26	104	43	103



**LOT 55**



# ANGUS 2 YEAR OLD BULLS



**LOT 56**

## 56 GH RESOURCE ERIC 405G

BW: 103 lbs NHP 405G Feb 13, 2019

SAV RESOURCE 1441 RITO 707 OF IDEAL 3407  
SAV BLACKCAP MAY 4136  
TWIN HILLS ERICA 2A BENCHMARK EXT TRAVELER 9126  
ERICA OF TWIN HILLS 16W

CE	BW	WW	YW	MM	TM	REA	IMF
-6.0	5.6	47	93	20	43		

2 year old's first calf and it's a good one especially in regards to grow safe data. ADG of 3.5 110 index, 5.36 F/G, index 107 and NHP ranked 105. Resource out of one of my Dad's top cow families, Erica.

BW	WW	205	YW	LMY	BK Fat	IMF score	REA in <sup>2</sup>	REA/100#
103	640	642	1380	66.23	4.29	AA-	14.60	0.93
ADG	EFF Index	FEED to GAIN	RFI Index	NHP Rank	NHP Index			
3.51	107	5.36	97	36	105			

## 57 GH 4420 COMMERCIAL LAD 401G

BW: 85 lbs NHP 401G Feb 11, 2019

MAF FIRST IMPRESSION 4420 DAMERON FIRST IMPRESSION 4420  
MAF MISS JETSTREAM 2928  
COMM ANGUS 2639  
N/A  
N/A

CE	BW	WW	YW	MM	TM	REA	IMF
N/A							

Sells NON-PAPERED Well here he is if your are looking for a bull that really excels on growsafe. ADG of 4.21 115% index, 3.1 F/G, 138% RFI of 126 index and NHP ranking of 126. Dam is a good commercial Angus cow.

BW	WW	205	YW	LMY	BK Fat	IMF score	REA in <sup>2</sup>	REA/100#
85	638	635	1264	64.60	5.71	AAA-	14.38	0.91
ADG	EFF Index	FEED to GAIN	RFI Index	NHP Rank	NHP Index			
4.21	138	3.10	126	1	126			

## 58 GH RESOURCE COMM LAD 420G

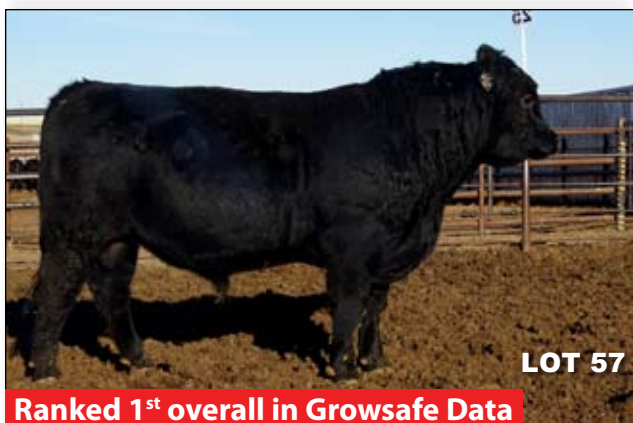
BW: 102 lbs NHP 420G Feb 15, 2019

SAV RESOURCE 1441 RITO 707 OF IDEAL 3407  
DMM MISS ESSENCE 14Y  
COMM ANGUS 460  
N/A  
N/A

CE	BW	WW	YW	MM	TM	REA	IMF
N/A							

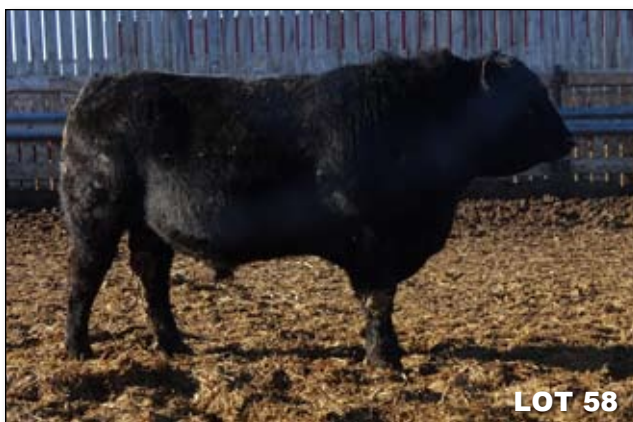
Sells Non-PAPERED Another one that is high on growsafe data. 4.54 ADG Indexing 117 113% index form F/G and NHP index of 109. Resource son out of a commercial Angus cow. This guy has the lots of muscle like his mother.

BW	WW	205	YW	LMY	BK Fat	IMF score	REA in <sup>2</sup>	REA/100#
102	626	634	1447	65.01	5.24	AAA+	14.30	0.94
ADG	EFF Index	FEED to GAIN	RFI Index	NHP Rank	NHP Index			
4.54	113	6.14	97	21	109			



**LOT 57**

**Ranked 1<sup>st</sup> overall in Growsafe Data**



**LOT 58**



# ANGUS 2 YEAR OLD BULLS



LOT 59

## 59 GH IMPRESSION GAMBLER 510G

BW: 80 lbs NHP 510G Feb 16, 2019  
 DAMERON FIRST IMPRESSION 4420  
 MAF FIRST IMPRESSION 4420 MAF MISS JETSTREAM 2928  
 MJT AJ 409Z  
 GH AJ ERICA 94E GH ADAMS NEUTRON ERICA 203U

CE	BW	WW	YW	MM	TM	REA	IMF
5.0	1.0	43	78	18	39		

Really long classic, smooth bull recommended for heifers. 2 year old's first calf out of our top heifer bull First Impression. Erica cow family. Ultrasound showing prime marbling best by quite a bit. 6.7 rating. Nice growsafe data with ADG of 3.53, index 114 F/G of 5.34 and NHP index of 103.

BW	WW	205	YW	LMY	BK Fat	IMF score	REA in <sup>2</sup>	REA/100#
80	648	659	1368	65.12	5.75	prime	15.06	0.92
ADG	EFF Index	FEED to GAIN	RFI Index	NHP Rank	NHP Index			
3.53	107	5.34	92	38	103			

## Ranked 15<sup>th</sup> overall in Growsafe Data

## 61 GH BROKEN BOW BOY 441G

BW: 92 lbs NHP 441G Feb 21, 2020  
 SUMMITCREST COMPLETE 1P55  
 KM BROKEN BOW 002 SUMMITCREST PRINCESS 0P12  
 GH COVERBOY BONNIE 57H GH COVERBOY ERIC 110R  
 BIG SKY BONNIE 857

CE	BW	WW	YW	MM	TM	REA	IMF
-2.0	2.8	61	101	24	55		

Nice growsafe numbers with a 3.84 ADG and fantastic F/G of 3.91, 122% index and RFI index of 114 with NHP at 113. Carcass also strong with AAA rating for marbling and still 1.03 REA/100 lbs. Broken Bow sire and Coverboy cow. Solid pedigree

BW	WW	205	YW	LMY	BK Fat	IMF score	REA in <sup>2</sup>	REA/100#
92	609	632	1281	66.37	5.00	AAA+	15.37	1.03
ADG	EFF Index	FEED to GAIN	RFI Index	NHP Rank	NHP Index			
3.84	122	3.91	114	15	113			

## 62 GH BROKEN BOW LAD 421G

BW: 95 lbs NHP 421G Feb 15, 2020  
 SUMMITCREST COMPLETE 1P55  
 KM BROKEN BOW 002 SUMMITCREST PRINCESS 0P12  
 COMM ANGUS 9325 N/A  
 N/A

Sells NON-PAPERED This guy had an ADG of 4.3 117% index and NHP ranking of near 100. Another Broken Bow son. Broken Bow excels in low birth weight and Carcass. Only a couple sons in the sale.

BW	WW	205	YW	LMY	BK Fat	IMF score	REA in <sup>2</sup>	REA/100#
95	676	685	1388	64.58	4.70	AAA-	13.81	0.85
ADG	EFF Index	FEED to GAIN	RFI Index	NHP Rank	NHP Index			
4.30	93	5.35	79	65	96			



LOT 60

## 60 GH CROSSFIRE JUBILEE LAD 438G

BW: 82 lbs NHP 438G Feb 20, 2020  
 BAR-H CROSSFIRE 29C BAR-H CROSSFIRE 63A  
 BAR-H ECHO 97A  
 GH JUBILEE ROSE 116Z GH ADAMS 110R JUBILEE 78U  
 GH ADAMS CAPACITY ROSE 12W

CE	BW	WW	YW	MM	TM	REA	IMF
7.0	1.5	38	78	17	36		

Another high AAA marbling bull. One of the good Crossfire sons. Dam is of the Barbara Rose family and top side Coverboy. As good as it gets for foundation genetics. Another one to use on heifers.

BW	WW	205	YW	LMY	BK Fat	IMF score	REA in <sup>2</sup>	REA/100#
82	531	549	1206	64.67	4.76	AAA+	13.28	0.93

## Ranked 14<sup>th</sup> overall in Growsafe Data

## 63 GH GRIZZLEY CRANK 558G

BW: 98 lbs NHP 558G Feb 19, 2020  
 DMM CRANK 13E 74-51 SUDDEN LOOK 1023  
 DMM MISS ESSENCE 14Y  
 U2 GRIZ 124Z  
 GH 124Z LADY GRIZ 34B GH ADAMS 164T LADY 272W

CE	BW	WW	YW	MM	TM	REA	IMF
N/A							

Sells NON-PAPERED Flushmate with lot 64. Both these 2 could be the buy of the sale. Their dam 34B is my best Angus cow and Crank. Lots of growth here look at this guy's growsafe ADG of 3.75, 118% index F/G of 4.96, 114 index and NHP rating of 113.

BW	WW	205	YW	LMY	BK Fat	IMF score	REA in <sup>2</sup>	REA/100#
98	746	769	1535	66.39	3.33	prime	13.60	0.79
ADG	EFF Index	FEED to GAIN	RFI Index	NHP Rank	NHP Index			
3.75	114	4.96	109	14	113			



# ANGUS 2 YEAR OLD BULLS



**LOT 64**

Sells NON-PAPERED Flushmate with lot 63. This guy will add lbs to any calf crop and maternal as well. Big power bull that rated High AAA marbling and almost 16" ribeye.

## 64 GH GRIZZLEY CRANK 687G

BW: 105 lbs NHP 687G Feb 24, 2019

DMM CRANK 13E 74-51 SUDDEN LOOK 1023

DMM MISS ESSENCE 14Y

U2 GRIZ 124Z

GH 124Z LADY GRIZ 34B GH ADAMS 164T LADY 272W

CE	BW	WW	YW	MM	TM	REA	IMF
N/A							

BW	WW	205	YW	LMY	BK Fat	IMF score	REA in <sup>2</sup>	REA/100#
105	708	746	1462	66.62	4.76	AAA++	15.67	0.92

ADG	EFF Index	FEED to GAIN	RFI Index	NHP Rank	NHP Index
2.56	87	6.53	104	77	90

## 66 GH SAFARI ELEMENT ET 698G

BW: 77 lbs NHP 698G Feb 25, 2019

BAR-E-L SAFARI 18S SAV SUCCESSOR 1175

HAPPYVALE DELIA 25K

DMM MISS ESSENCE 108J TC STOCKMAN 365

DMM MISS ESSENCE 22B

CE	BW	WW	YW	MM	TM	REA	IMF
-1.0	4.4	36	67	26	39		

This will be the sleeper of the sale. An embryo from MillerWilson out of their great 108J cow. This guy will produce females.

BW	WW	205	YW	LMY	BK Fat	IMF score	REA in <sup>2</sup>	REA/100#
77	701	742	1395	65.92	2.86	AA-	12.42	0.89

ADG	EFF Index	FEED to GAIN	RFI Index	NHP Rank	NHP Index
1.96	47	62	94	96	68



**LOT 67**

## 65 GH CROSSFIRE JESTER 650G

BW: 77 lbs NHP 650G Mar 11, 2019

BAR-H CROSSFIRE 29C BAR-H CROSSFIRE 63A

BAR-H ECHO 97A

MJT JESTRESS 186Y BAR-E-L WISECRACK 246W

MJT JESTRESS 120S

CE	BW	WW	YW	MM	TM	REA	IMF
8.00	-0.02	30	60	15	30		

A Crossfire recommended for heifers -0.2 BW EPD. Good in growsafe with a 3.84 ADG, 105 F?G index and 103 RFI index and NHP of 102. Dam is one of the cows we got from MJT, 186Y. Been a great one.

BW	WW	205	YW	LMY	BK Fat	IMF score	REA in <sup>2</sup>	REA/100#
77	551	619	1280	65.17	4.80	AAA-	13.94	0.98

ADG	EFF Index	FEED to GAIN	RFI Index	NHP Rank	NHP Index
3.84	105	6.73	103	46	102

## 68 GH COALITION 9907G

BW: 77 lbs Mar 15, 2019

U-2 COALITION 206C HF SYNDICATE 213Z

U-2 ERELITE 109Z

MTNROSE BEMINDFUL MAID 719E V DAR REALLY WINDY 8502

MTNROSE BEMINDFUL MAID 500R

CE	BW	WW	YW	MM	TM	REA	IMF
Est 6.0	Est 1.0	Est 46	Est 87	19	Est 33		

US PAPERED Another one of Brad's This guy has a Coalition pedigree & will be a very safe heifer bull. He's another one with a high AAA marbling score.

BW	WW	205	YW	LMY	BK Fat	IMF score	REA in <sup>2</sup>	REA/100#
77	548	497	1240	66.54	3.33	AAA+	13.78	1.03

ADG	EFF Index	FEED to GAIN	RFI Index	NHP Rank	NHP Index
3.46	92	7.63	100	71	94

## 67 GH BLACK CEDAR ROSE 9922G

BW: 77 lbs Apr 29, 2019

MTNROSE BLACK CEDAR ROSE E712 KA BLACK CEDAR 080

VDAR ROSETTA 0460

MTNROSE FERNS PRIDE 304A DIETZ REALLY WINDY 6031

MTNROSE FERNS PRIDE 630S

CE	BW	WW	YW	MM	TM	REA	IMF
N/A							

A young bull out of one of Brad Smith's very top cows. Deep, powerful cow with lots of milk. High ranking with a AAA+ marbling score.

BW	WW	205	YW	LMY	BK Fat	IMF score	REA in <sup>2</sup>	REA/100#
77	603	652	1240	62.82	5.75	AAA	12.24	0.86



# ANGUS 2 YEAR OLD BULLS



**LOT 69**

**Ranked 8<sup>th</sup> overall in Growsafe Data**

This is a pretty good calf. Lots of muscle, power and performance. Great Ultrasound data with AAA marbling and 1.08 REA/100 lbs. Great growsafe as well. ADG of 4.17, index 113. 3.74 F/G index 125 RFI of 115 & NHP index of 118

## 69 GH CROSSFIRE ULTRA 957G

BW: 93 lbs NHP 957G Mar 20, 2019

BAR-H CROSSFIRE 29C BAR-H CROSSFIRE 63A  
BAR-H ECHO 97A  
GH 21Z ULTRA BELLAH 183B GH ULTRA CAPACITY 21Z  
GH ADAMS 110R BELLAH 176X

CE	BW	WW	YW	MM	TM	REA	IMF	
2	2.1	40	73	16	36			
BW	WW	205	YW	LMY	BK Fat	IMF score	REA in <sup>2</sup>	REA/100#
93	595	700	1302	62.45	9.52	AAA	16.53	1.08
ADG	EFF Index	FEED to GAIN	RFI Index	NHP Rank	NHP Index			
4.17	125	3.74	115	8	118			

## 71 GH COMMERCIAL BROKEN LAD 1594G

BW: 78 lbs NHP 1594G Mar 10, 2019

KM BROKEN BOW 002 SUMMITCREST COMPLETE 1P55  
SUMMITCREST PRINCESS 0P12  
COMM ANGUS 2138E N/A  
N/A

CE	BW	WW	YW	MM	TM	REA	IMF	
N/A								
BW	WW	205	YW	LMY	BK Fat	IMF score	REA in <sup>2</sup>	REA/100#
78	572	640	1190	65.43	4.33	AAA	13.66	0.93

Sells NON-PAPERED Pretty cool bull with lots of style and class. AAA marbling

## 72 GH 705D CREDIT LAD 1087G

BW: 98 lbs NHP 1087G Apr 30, 2019

GH 4B CREDIT 705D GH 110R COVER ERIC 4B  
GH 385Z BOLD LADY 16B  
GH PEAK WILMA 107A PEAK DOT CAPACITY 318T  
TWIN HILLS BARBARA ROSE 92U

CE	BW	WW	YW	MM	TM	REA	IMF	
-1.0	3.4	52	74	24	50			
BW	WW	205	YW	LMY	BK Fat	IMF score	REA in <sup>2</sup>	REA/100#
98	620	932	1480	67.87	3.81	AA	16.01	0.96
ADG	EFF Index	FEED to GAIN	RFI Index	NHP Rank	NHP Index			
4.83	108	6.51	84	33	106			

This guy could get lost in the group, but he's pretty good. One of the younger ones and one of the heaviest. Big 16" REA also and LMY of 67.87. Growsafe ADG of 4.83 index of 125, 108 F/G ration and NHP index of 106

## 70 GH CROSSFIRE LAD 975G

BW: 90 lbs NHP 975G Mar 25, 2019

BAR-H CROSSFIRE 29C BAR-H CROSSFIRE 63A  
BAR-H ECHO 97A  
COMM ANGUS 20A PEAK DOT CAPACITY 318T  
N/A

CE	BW	WW	YW	MM	TM	REA	IMF	
N/A								
BW	WW	205	YW	LMY	BK Fat	IMF score	REA in <sup>2</sup>	REA/100#
90	543	654	1490	66.19	4.29	AAA	14.55	0.92
ADG	EFF Index	FEED to GAIN	RFI Index	NHP Rank	NHP Index			
3.95	100	7.06	96	55	99			

Sells NON-PAPERED Good hair on this guy. Another great Angus cow with a perfect udder, lots of muscle from his dam. Growsafe 3.95 ADG, index of 102 & NHP index of 99, AAA marbling on the carcass side with a 66.19 LMY.



**LOT 70**



# SIMMENTAL/ANGUS BULL CALVES

You all know the strides the Simmental breed has made over the last few years and this group are recipients of this progress. We've sought out some of the best young Simmental sires and bred them to our top Angus and Hereford cows and these are the results. I couldn't be prouder of these bulls.



## 1/2 Simi/Angus Registered Percentage

This is a great group of calves and this guy starts it. He is 1/2 Simi/Angus. Will be nice when we get his carcass data sale day. He will have a big REA. Dam is an outstanding, deep, thick Angus cow with a perfect udder. 510H has the disposition of his sire. Just really quiet. I have a lot of time for this one. Excellent growsafe with an ADG index 139, F/G index 133

## Ranked 3<sup>rd</sup> overall in Growsafe Data

### 73 GH BLACK WHEATLAD 510H

BW: 93 lbs NHP 510H Feb 1, 2020

WHEATLAND BULL 777E WHEATLAND KILL SWITCH  
WHEATLAND LADY 3189A

COMM ANGUS 1716  
N/A  
N/A

CE	BW	WW	YW	MM	TM	REA	IMF
11.7	0.9	71	107	24	60	0.63	0.14

ADG	EFF Index	FEED to GAIN	RFI Index	NHP Rank	NHP Index
4.10	133	4.36	108	2	127

BW	WW	205
93	735	703

## Ranked 2/64 overall in Growsafe Data

### 74 GH CROSSBRED ENHANCE 21H

BW: 71 lbs NHP 21H Jan 9, 2020

SYDGEN ENHANCE SYDGEN EXCEED 3223  
SYDGEN RITA 2618

SIMI ANGUS 1051F CROSSROAD BLACK JOLT 41C  
N/A

CE	BW	WW	YW	MM	TM	REA	IMF
N/A							

## 1/4 Simi/Angus Sells NON-PAPERED

Pretty impressive to have this kind of power and only a 71lb birth weight. He's our heaviest calf and really, really easy fleshing. Will be fun to see his growsafe data. Unbelievable growsafe numbers. ADG 5.07, F/G index 132 Wow!

ADG	EFF Index	FEED to GAIN	RFI Index	NHP Rank	NHP Index
5.07	132	3.97	97	2	126

BW	WW	205
71	777	680

### 75 GH 777E WHEATLAD 380H

BW: 106 lbs NHP 380H Jan 28, 2020

WHEATLAND BULL 777E WHEATLAND KILL SWITCH  
WHEATLAND LADY 3189A

GH MISS JOLT 141E CROSSROAD BLACK JOLT 41C  
COMM ANGUS COW

CE	BW	WW	YW	MM	TM	REA	IMF
9.8	1.6	73	105.8	25.9	62	0.76	0.05

## Registered 3/4 Simi Angus

Dam is Angus x Jolt and Sire is 777E. Black with lots of muscle and power with a great dam to back him up.

ADG	EFF Index	FEED to GAIN	RFI Index	NHP Rank	NHP Index
1.46	36.0	10.6	101	45	62

BW	WW	205
72	638	601





# SIMMENTAL/ANGUS BULL CALVES

Our 2 Red Simi Cross Bulls - Bulls recommended for heifers



## 76 GH 9F DICELAD 778H

BW: 75 lbs NHP 778H Feb 20, 2020

PARKHILL DICE 9F KS BRAVADO P68  
MISS PARKHILL IDA 36D  
GH MISS BLK JOLT 934F CROSSROAD BLACK JOLT 41C  
COMM ANGUS COW

CE	BW	WW	YW	MM	TM	REA	IMF
8.4	2.1	74	109	24	61	0.59	0.01
ADG	EFF Index	FEED to GAIN	RFI Index	NHP Rank	NHP Index		
2.91	96	6.73	96	37	97		
BW	WW	205					
75	536	558					

### Registered 3/4 Simi Angus

Red calf that is also 3/4 Simmental. Sire is straight red with calving ease written all over him. Recommended for heifers. Good hair and nice disposition.

## 77 GH REDCROSS WHEATLAD 109H

BW: 58 lbs NHP 109H Jan 14, 2020

WHEATLAND BULL 777E WHEATLAND KILL SWITCH  
WHEATLAND LADY 3189A  
GH 21C BARBARA ROSE 192E GH AJ 21C  
GH JUBILEE ROSE 59A

CE	BW	WW	YW	MM	TM	REA	IMF
11.7	0.9	71	107	24.9	60	0.63	0.14
ADG	EFF Index	FEED to GAIN	RFI Index	NHP Rank	NHP Index		
2.43	85	7.46	99	41	89		
BW	WW	205					
58	520	468					

### 1/2 Simi/Angus Registered Percentage Simi Angus

He's straight red with lots of hair. Another 777E recommended for heifers. His dam is a young Barbara Rose Daughter with a great udder.





# SIMMENTAL/ANGUS BULL CALVES



**LOT 78**

## 78 GH BROCCO COWBOY 114H

BW: 97 lbs NHP 114H Jan 15, 2020

ULTRA COWBOY 33E ULTRA CROWD TEASER 2C  
ULTRA COWGIRL 17A  
GH IDOL LADY 464D CROSSROAD BLACK IDOL 733A  
COMM ANGUS COW

CE	BW	WW	YW	MM	TM	REA	IMF
7.7	2.4	71	114.2	20.6	56.1	0.85	0.15

### Registered Percentage 1/2 Simi Angus

This guy has more power and growth. Lots of muscle and really good disposition. Dam is a straight Black Angus cow with a great udder.

ADG	EFF Index	FEED to GAIN	RFI Index	NHP Rank	NHP Index
2.25	75	8.11	94	44	82

BW	WW	205
97	615	553

## 79 GH BLK COWBOY 404H

BW: 88 lbs NHP 404H Jan 25, 2020

ULTRA COWBOY 33E ULTRA CROWD TEASER 2C  
ULTRA COWGIRL 17A  
COMM ANGUS 915F N/A  
N/A

CE	BW	WW	YW	MM	TM	REA	IMF
N/A							

### 1/2 Simi/Angus Sells NON-PAPERED

### Registered Percentage Simi Angus.

One of the good ones with lots of hair. Dam is a 2 year old heifer with lots of individual performance.

ADG	EFF Index	FEED to GAIN	RFI Index	NHP Rank	NHP Index
2.14	79	7.87	97	43	83

BW	WW	205
85	740	688



**LOT 79**

## 80 GH BLACK WHEATLAD 515H

BW: 115 lbs NHP 515H Feb 2, 2020

WHEATLAND BULL 777E SYDGEN EXCEED 3223  
SYDGEN RITA 2618  
COMM ANGUS 1668 N/A  
N/A

CE	BW	WW	YW	MM	TM	REA	IMF
11.7	0.9	71	107	24	60	0.63	0.14

### 1/2 Simi/Angus Registered Percentage Simi Angus

A 777E that I like alot. He too has a good disposition. This is his Dam's second calf, her first is a young Simi/Angus Heifer that will calve this spring.

ADG	EFF Index	FEED to GAIN	RFI Index	NHP Rank	NHP Index
2.80	102	6.38	99	36	98

BW	WW	205
118	682	655

**Ranked 1<sup>st</sup> overall in Growsafe Data**

## 81 GH WHEAT BLKCAP 142H

BW: 88 lbs NHP 142H Jan 22, 2020

WHEATLAND BULL 777E WHEATLAND KILL SWITCH  
WHEATLAND LADY 3189A  
GH 21C LADY BLKCAP 179E GH AJ 21C  
GH 318T BLKCAP LADY 44A

CE	BW	WW	YW	MM	TM	REA	IMF
11.7	0.9	71	107	24.9	60	0.63	0.14

### 1/2 Simi/Angus Registered Percentage Simi Angus

Out of a Purebred Angus cow that raised a bull selling to Morton Ranches last year. This guy is straight black.

ADG	EFF Index	FEED to GAIN	RFI Index	NHP Rank	NHP Index
4.48	135	4.18	108	1	132

BW	WW	205
88	670	617



**LOT 80**



# SIMMENTAL/ANGUS 2 YEAR OLD BULLS

These bulls also ran on grass with no extra feed until early November. Excellent feet.



**LOT 82**

## 82 GH BLACK WHEATLAND 393G

BW: 72 lbs NHP 393G Feb 11, 2019

WHEATLAND BULL 777E WHEATLAND KILL SWITCH  
WHEATLAND LADY 3189A  
GH BLACK IDOL TIBBIE 208E CROSSROAD BLACK IDOL 733A  
COMM ANGUS COW

CE	BW	WW	YW	MM	TM	REA	IMF
9.3	2.2	73	109	25	61	0.71	0.11

BW	WW	205	YW	LMY	BK Fat	IMF score	REA in <sup>2</sup>	REA/100#
72	650	669	1307	71.24	2.86	AA+	18.96	1.23

ADG	EFF Index	FEED to GAIN	RFI Index	NHP Rank	NHP Index
2.62	104	5.61	114	20	100

## Registered 3/4 Simi Angus

This is why we are raising Simi/Angus bulls. This guy is great in any breed. 24/32 Simi with muscle, muscle and more muscle. Has good hair as well. Did you note the 72lb birth weight? He's also out of 777E and yes, he is really quiet. Just look at this guys Ultrasound data. 19" ribeye and still AA++ marbling and 71.24 LMY. Don't know if I've seen one bigger. Did good on RFI with a 5.61 F & 104 index. NHP index 100.

## 83 GH 777E BUCKWHEAT 249G

BW: 77 lbs NHP 249G Feb 4, 2019

WHEATLAND BULL 777E WHEATLAND KILL SWITCH  
WHEATLAND LADY 3189A  
GH BLACK IDOL ROSE 199E CROSSROAD BLACK IDOL 733A  
COMM ANGUS COW

CE	BW	WW	YW	MM	TM	REA	IMF
9.3	2.2	73	109	25	61	0.71	0.11

## Registered 3/4 Simi Angus

To look at this guy, you would think he had good carcass and yes he did. In fact he had a big ribeye of 1.11/100 lbs and 66.91 LMY. This guy is also 3/4 simi and sire is again 777E, and again, a good disposition.

BW	WW	205	YW	LMY	BK Fat	IMF score	REA in <sup>2</sup>	REA/100#
77	560	560	1174	66.54	4.76	AA++	15.58	1.11

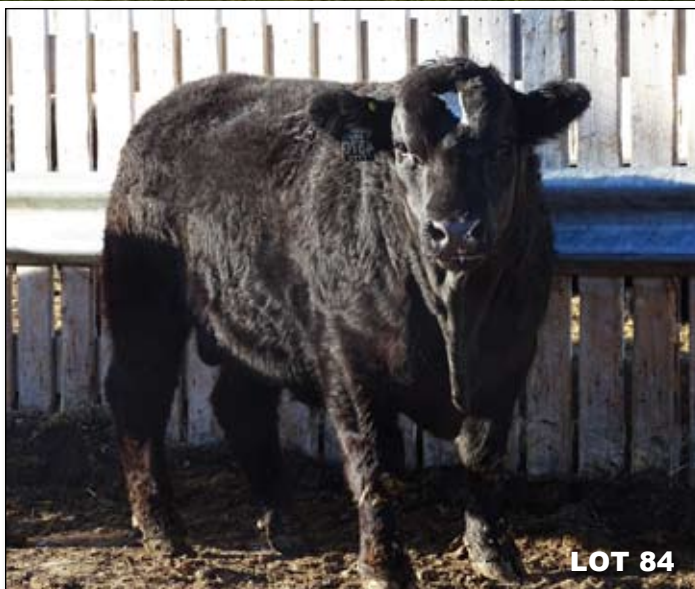
ADG	EFF Index	FEED to GAIN	RFI Index	NHP Rank	NHP Index
2.95	71	6.42	80	63	77



**LOT 83**



# SIMMENTAL/ANGUS 2 YEAR OLD BULLS



**LOT 84**

## 84 GH MR BLK WHEATLAND 437G

BW: 81 lbs NHP 437G Feb 19, 2019  
WHEATLAND BULL 777E WHEATLAND KILL SWITCH  
WHEATLAND LADY 3189A  
COMM ANGUS 1543 N/A  
N/A

CE	BW	WW	YW	MM	TM	REA	IMF
11.7	0.9	71	107	24.9	60	0.63	0.14

### 1/2 Simi/Angus Registered Percentage

One of the few BWF 777 sons, but he's a good one. Muscle, and more muscle. Once again the Ultrasound data shows that. 17&1/4" ribeye and 69.32 LMY. Still almost AAA in marbling. He also has a great hair coat.

BW	WW	205	YW	LMY	BK Fat	IMF score	REA in <sup>2</sup>	REA/100#
81	650	693	1383	69.32	3.33	AA++	17.20	1.07
ADG	EFF Index	FEED to GAIN	RFI Index	NHP Rank	NHP Index			
2.80	92	6.30	98	28	93			

## 85 GH BLK COM COWBOY 427G

BW: 100 lbs NHP 427G Feb 17, 2019  
ULTRA COWBOY 33E ULTRA CROWD TEASER 2C  
ULTRA COWGIRL 17A  
COMM ANGUS 2434 N/A  
N/A

CE	BW	WW	YW	MM	TM	REA	IMF
10	1.1	68	111	21	55	0.78	0.19

### 1/2 Simi/Angus Registered Percentage

Straight Black our of our other Simi bull, Ultra 33E. This guy is a little deceiving, but he really is thick when you take a second look, and then go and look at his Ultrasound. Yes, he has a ribeye of 19" and 69.78 LMY and still strong AA marbling.

BW	WW	205	YW	LMY	BK Fat	IMF score	REA in <sup>2</sup>	REA/100#
100	644	681	1423	69.78	4.33	AA+	19.02	1.15
ADG	EFF Index	FEED to GAIN	RFI Index	NHP Rank	NHP Index			
3.68	94	7.57	93	25	95			



**LOT 85**

## 86A GH SIR JOLT 619G

BW: 100 lbs NHP 619G Feb 28, 2019  
CROSSROAD BLACK JOLT 41C SPRINGCREEK ALL IN 155Y  
CROSSROAD ROSEMARY 394R  
COMM ANGUS 9354  
COMM ANGUS 9354

CE	BW	WW	YW	MM	TM	REA	IMF
7.8	1.7	70	102	24	59	0.72	0.12

### 1/2 Simi/Angus Registered Percentage Simi Angus

If you're looking for a little more growth, then 619G is your guy. Not as much REA, but still 68.15 LMY. This guy will do nothing by keep getting better. He also has a great temperament.

BW	WW	205	YW	LMY	BK Fat	IMF score	REA in <sup>2</sup>	REA/100#
100	603	670	1298	68.15	2.92	AA-	15.24	1.00
ADG	EFF Index	FEED to GAIN	RFI Index	NHP Rank	NHP Index			
3.40	94	6.18	83	27	95			

**Ranked 7<sup>th</sup> overall in Growsafe Data**

## 86B GH 777E TOP CROSS 1061G

BW: AA lbs NHP 1061G Apr 16, 2019  
WHEATLAND BULL 777E WHEATLAND KILL SWITCH  
WHEATLAND LADY 3189A  
GH 124Z LADY GRIZ 34B U2 GRIZ 124Z  
GH ADAMS 164T LADY 272W

CE	BW	WW	YW	MM	TM	REA	IMF
	0.9	71	107	24.9	60	0.63	0.14

### 1/2 simi/Angus

BW	WW	205	YW	LMY	BK Fat	IMF score	REA in <sup>2</sup>	REA/100#
85	602	626	1299	67.19	3.81	AAA-	67.19	0.99
ADG	EFF Index	FEED to GAIN	RFI Index	NHP Rank	NHP Index			
5.36	125	5.32	96	7	120			



**LOT 86B**



# SIMMENTAL/ANGUS 2 YEAR OLD BULLS

## 1/2 Hereford/Simi Hereford Plus

This is another pretty good 33E Ultra son out of a proven Purebred Hereford cow, that has 3 daughters in the herd, so she is a good producing cow. This guy will keep growing and get pretty big. Good strong AA marbling score. He did excel in the growsafe test with an ADG of 3.92, index 112 and a F/G of 4.84 & index of 115. RFI of 104 and NHP index of 110



**Ranked 11<sup>th</sup> overall in Growsafe Data**

**LOT 87**

## 87 GH COWBOY CROSSBRED BRIT 684G

BW: 86 lbs NHP 684G Feb 23, 2019  
ULTRA COWBOY 33E ULTRA CROWD TEASER 2C  
ULTRA COWGIRL 17A  
FA 166S BRITISHER LADY 200W DA 56L BRITISHER 166S  
FA 592R BRITISHER LADY 17T

CE	BW	WW	YW	MM	TM	REA	IMF	
2.0	3.9	59	1.1	21	50	0.20	0.09	
BW	WW	205	YW	LMY	BK Fat	IMF score	REA in <sup>2</sup>	REA/100#
86	576	627	1278	66.93	4.29	AA++	15.46	1.03
ADG	EFF Index	FEED to GAIN	RFI Index	NHP Rank	NHP Index			
3.92	115	4.84	104	11	110			

## 88 GH MR WHEATLAND 831G

BW: 83 lbs NHP 831G Mar 8, 2019  
WHEATLAND BULL 777E WHEATLAND KILL SWITCH  
WHEATLAND LADY 3189A  
GH BLKCAP MISS IDOL 329D CROSSROAD BLACK IDOL 733A  
COMM ANGUS

CE	BW	WW	YW	MM	TM	REA	IMF
7.8	1.7	70	102	24	59	0.72	0.12

### Registered 3/4 Simi Angus

Straight black calf out of 777E. 3/4 Simi and 1/4 Angus. This guy's got hair and extra length. Another one that's got lots of REA of 1.12/100lbs and 69.31 LMY. He also excels at growsafe with an ADG of 4.10 & indexed 112, F/G index of 110 with a 4.51F/G ratio NHP index 106

BW	WW	205	YW	LMY	BK Fat	IMF score	REA in <sup>2</sup>	REA/100#
83	576	664	1320	69.31	3.33	AA	17.19	1.12
ADG	EFF Index	FEED to GAIN	RFI Index	NHP Rank	NHP Index			
4.10	110	4.51	96	19	106			



**LOT 88**

## 89 GH JOLT LAD 983G

BW: 107 lbs NHP 983G Apr 2, 2019  
CROSSROAD BLACK JOLT 41C SPRINGCREEK ALL IN 155Y  
CROSSROAD ROSEMARY 394R  
COMM ANGUS 9353 N/A  
N/A

CE	BW	WW	YW	MM	TM	REA	IMF
7.8	1.7	70	102	24	59	0.72	0.12

### 1/2 Simi/Angus Registered percentage

This guy is a Jolt son, but takes after the Angus side a little more. Good hair and lots of depth. He also did well in growsafe with a 4.14 ADG, 111 index and 106 index for F/G. NHP index of 104

BW	WW	205	YW	LMY	BK Fat	IMF score	REA in <sup>2</sup>	REA/100#
107	669	888	1365	63.70	6.12	AAA++	16.30	0.99
ADG	EFF Index	FEED to GAIN	RFI Index	NHP Rank	NHP Index			
4.14	106	6.69	95	22	104			



**LOT 89**



# SIMMENTAL / ANGUS 2 YEAR OLD BULLS

**90**

**GH SIR JOLT 902G**

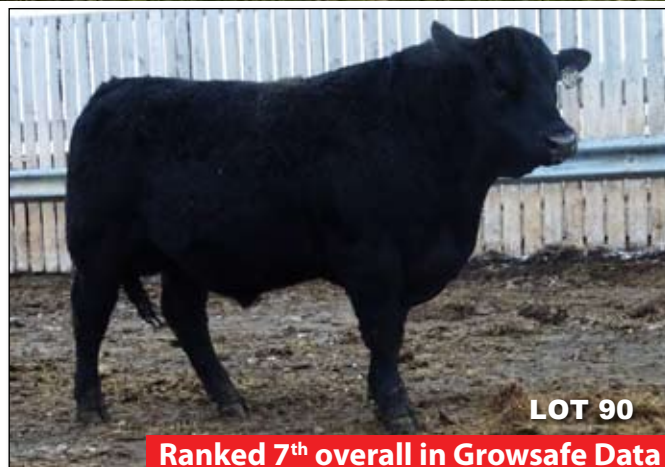
BW: 106 lbs NHP 902G Mar 12, 2019  
 CROSSROAD BLACK JOLT 41C SPRINGCREEK ALL IN 155Y  
 CROSSROAD ROSEMARY 394R  
 COMM ANGUS NA

CE	BW	WW	YW	MM	TM	REA	IMF
6.1	3.9	95	154	25	73	0.62	0.08

## 1/2 Simi/Angus Registered percentage

Another great Jolt son to end this group with. Lots of growth and really good hair. Little smaller REA, but AAA marbling and really succeeded in growsafe ADG of 113, index F/G of 5.06, 114 index, RFI of 105 index and NHP index of 111

BW	WW	205	YW	LMY	BK Fat	IMF score	REA in <sup>2</sup>	REA/100#
106	692	702	1530	66.67	3.81	AAA+	14.54	0.85
ADG	EFF Index	FEED to GAIN	RFI Index	NHP Rank	NHP Index			
3.59	114	5.06	105	7	111			



**LOT 90**

**Ranked 7<sup>th</sup> overall in Growsafe Data**

## HEREFORD BULL CALVES

Only due to our sheer numbers can we offer this quality. Each one of these bulls has Herd Bull potential and we'd be proud to use any of them in our own program. They had no creep, so in order for these to be of this weight and power, you can be assured their dams are some of our best. All hereford bulls were ranked out of 115 bulls.

**91**

**GH ECLIPSE PATHWAY 58H**

BW: 80 lbs NHP 58H Jan 12, 2020  
 GH 377X ECLIPSE 27E GH ADAMS NITRO DESIGN ET 377X  
 MLL 425 RESOLUTION 315Y  
 FA 416T BRITISHER LADY 206Y GH ADAMS TWISTER 416T  
 FA 121M BRITISHER LADY 110S

**Ranked 17/115 overall in Growsafe Data**

Another great one with Herd Bull written all over him. 3.7 ADG on Grow Safe with 5.05 F/G index 119 and a NHP Index of 113. We're building our program around this guy's sire, Eclipse 27E and his dam 315Y because of the sheer muscle they produce and this is one their best. Great growsafe data with ADG 3.7, F/G index 117

CE	BW	WW	YW	MM	TM	REA	IMF	BW	WW	205	ADG	EFF Index	FEED to GAIN	RFI Index	NHP Rank	NHP Index
-0.9	5.1	49	78	19	44	0.25	0.11	80	750	677	3.70	117	5.32	101	17	112



**LOT 91**



# HEREFORD BULL CALVES

Here another outstanding Herd Bull prospect. I could write a book on this guy. Look at his Growsafe numbers 5.45 F/G with NHP index 115 and F/G index of 118. Dam is a great one with a perfect udder and tons of milk. Sire is fast becoming one of our best, raising 2 feature sons in our Dec sale that went to purebred breeders. I like this one. Look at his EPDs, performance like this and still low Birth weight. WOW! Great growsafe data, ADG 3.75, F/G index 118



**LOT 92**

## Ranked 10<sup>th</sup> overall in Growsafe Data

CE	BW	WW	YW	MM	TM	REA	IMF
3.1	3.6	61	92	29	59	0.19	0.08
ADG	EFF Index	FEED to GAIN	RFI Index	NHP Rank	NHP Index		
3.75	118	5.25	106	10	115		
BW	WW	205					
84	805	770					

## 92 GH 150A UPTOWN BRIT 281H

BW: 84 lbs NHP 281H Jan 21, 2020  
 FA UPTOWN BRITISHER 150A UPS UPTOWN ET  
 FA 39S BRITISHER LADY 153W  
 YV 30U MR. STAN SUNSHINE ET 31A  
 FA 31A BRITISHER LADY 104D FA UPTOWN BRITISHER LADY 144A

## 93 GH 599E ROCK HARBOR 239H

BW: 90 lbs NHP 239H Jan 19, 2020  
 GH EAGLE'S ROCK 599E GH 7101 ROCK SOLID 5Z  
 BP 144P STANDARD LADY 75Z  
 GH MVP NANCY 33D GH 8052 MVP 67Y  
 GH DESIGN NANCY 132A

CE	BW	WW	YW	MM	TM	REA	IMF
0.7	4.5	57	91	24	53	0.33	0.10

Another great son out of the great breeding 599E Rock 5Z son. This guy has as much maternal and great cows in his pedigree as any. Granddam is a donor female. Look at the length in this guy.

ADG	EFF Index	FEED to GAIN	RFI Index	NHP Rank	NHP Index
2.07	74	8.11	101	105	80

BW	WW	205
90	780	739



**LOT 93**

## Ranked 5/115 overall in Growsafe Data

## 94 GH RUGER BRITISH LAD 330H

BW: 82 lbs NHP 330H Jan 29, 2020  
 UPS SENSATION 3786 CHURCHILL SENSATION 028X  
 UPS MISS NEON 7734  
 FA 166Y BRITISHER 48C  
 FA 48C BRITISHER LADY 136E FA 48C BRITISHER LADY 136E

CE	BW	WW	YW	MM	TM	REA	IMF
7.1	2.4	57	88	27	56	0.50	0.17

This is my kind of calf. A true Herd Bull prospect and straight horned pedigree and, he could be used as a heifer bull to boot. Great Growsafe data as well. Ranked 5th out of 115 and 117 on NHP Index and 4th on RFI with a F/G of 4.55, a 123 index and still 3.68 WDA. Dam has a perfect udder. This guy will make females that have perfect udders and really feed efficient.

ADG	EFF Index	FEED to GAIN	RFI Index	NHP Rank	NHP Index
3.68	123	4.55	108	5	117

BW	WW	205
82	735	740



**LOT 94**



# HEREFORD BULL CALVES



**LOT 97**

Yes I think we found our straight horned calf that is a pretty good one. Marked red to the ground and great hair. His dam is a great one that never misses. Already produced 2 herd sires one at Hanson and the other at DW Herefords. 2 top 20 daughters in the herd. Great udder with little teats. I am excited to see his growsafe data. **Terms to be announced sale day.** ADG 4.81, F/G index 122.

## Ranked 2/115 overall in Growsafe Data

CE	BW	WW	YW	MM	TM	REA	IMF
0.8	4.3	49	81	22	46	0.43	0.11
ADG	EFF Index	FEED to GAIN	RFI Index	NHP Rank	NHP Index		
4.81	122	4.18	104	2	119		
BW	WW	205					
89	850	778					

## 97 GH 31A BRITISH SUN 605H

**BW: 89 lbs** **NHP 605H** **Feb 8, 2020**  
 YV30U MRSTAN SUNSHINE ET 31A LBH 268P STANDARD 30U  
 AGA 72M MISS SUNSHINE LAD 282P  
 FA 71S BRITISHER LADY 222W FA 109L BRITISHER 71S  
 FA 72K BRITISHER LADY 67R

## 95 GH 599E NUGGET REWIND 344H

**BW: 93 lbs** **NHP 344H** **Jan 24, 2020**  
 GH EAGLE'S ROCK 599E GH 7101 ROCK SOLID 5Z  
 BP 144P STANDARD LADY 75Z  
 GH NUGGET SIMBA LASS 18B GH ADAMS GOLD NUGGET ET 378W  
 GH ADAMS 767 SIMBA LASS 410X

CE	BW	WW	YW	MM	TM	REA	IMF
-0.7	4.7	60	93	18	48	0.46	0.06

Great calf with good data. Ranked 10th in Growsafe with a 5.90 F/G, which gives him a 108 index. Dam is one of our great cow families. The grandsire is our great 767 Holden Bull. We went back last year and used him again. You will hear more about this guy. Ranked in the top third of growsafe. F/G index 108.

ADG	EFF Index	FEED to GAIN	RFI Index	NHP Rank	NHP Index
3.22	108	5.90	102	37	104

BW	WW	205
93	785	732

## 96 GH 239D FLAIG BONO 573H

**BW: 97 lbs** **NHP 573H** **Feb 4, 2020**  
 GH SENSATION DRAFT 239D UPS SENSATION 3786  
 UPTOWN LASS 309B  
 GH KILO BONITA 88B MJT TOTAL ET 332W  
 GH ADAMS 796S DOMAN MISS 253W

CE	BW	WW	YW	MM	TM	REA	IMF
-0.6	5.3	57	101	29	58	0.30	0.17

Another really good calf out of an outstanding cow family. Grandmother is our great 253W cow (MVP's dam). Great hair, pigment and style. No creep so he will do nothing but keep getting better. Nice RFI numbers and carcass especially in the marbling department.

ADG	EFF Index	FEED to GAIN	RFI Index	NHP Rank	NHP Index
3.26	107	5.50	97	41	103

BW	WW	205
97	660	636



**LOT 95**



**LOT 96**



# HEREFORD BULL CALVES

## Ranked 13/115 overall in Growsafe Data 98 GH RAMBO HEAVYWEIGHT ET 763H

BW: 88 lbs NHP 763H Feb 21, 2020

GH RAMBO 279R GH NEON 17N  
HR GOLD DOMINO 251E  
GH 65X SANDY 171Z GH ADAMS 796 XPECTATION 65X  
GH ADAMS 3R SANDY 356T

CE	BW	WW	YW	MM	TM	REA	IMF
-2.3	4	52	73	22	48	0.38	0.08

Here he is. A straight horned calf out of 2 of our very best. His sire is the great Rambo. Need I say more, and then his dam is our #1 RFI cow and great producing 171Z. This guy is moderate and look at his EPDs. ADG 3.68 EFF index 118 F/G 4.87 Index 117 His sire Rambo is also a trait leader for RFI

ADG	EFF Index	FEED to GAIN	RFI Index	NHP Rank	NHP Index
3.33	117	4.87	112	15	112

BW	WW	205
88	600	617



LOT 98

# HEREFORD PLUS BULL CALVES

## 99 GH 33H CROSSBRED LAD 125H

BW: 93 lbs NHP 125H Jan 19, 2020

ULTRA COWBOY 33E ULTRA CROWD TEASER 2C  
ULTRA COWGIRL 17A  
GH 505C LADY 217E BCD 902W AMANDA 315A  
FA 58U BRITISHER LADY 133X

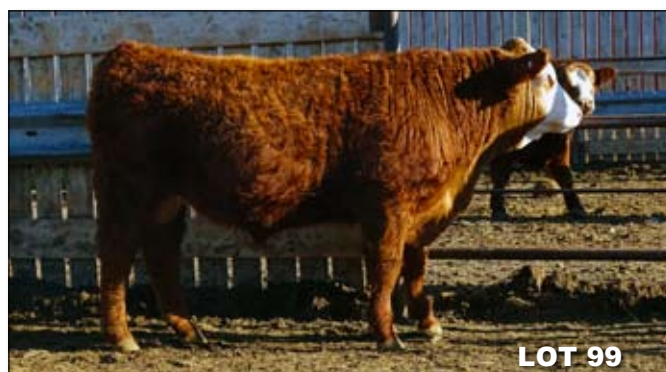
CE	BW	WW	YW	MM	TM	REA	IMF
-3.1	5.6	63	99.9	21.5	53	0.45	0.08

### HEREFORD PLUS 10088

Hereford plus calf. Great young Hereford cow with a great udder. Great hair and really good hip. This guy will keep getting better. Nice Hereford hair on him also

ADG	EFF Index	FEED to GAIN	RFI Index	NHP Rank	NHP Index
3.40	114	5.57	97	32	109

BW	WW	205
93	715	650



LOT 99

## 100 GH COWBOY MVP LAD 131H

BW: 93 lbs NHP 131H Jan 21, 2020

ULTRA COWBOY 33E ULTRA CROWD TEASER 2C  
ULTRA COWGIRL 17A  
GH MVP KATE 85E GH DESIGN KATIE 118A

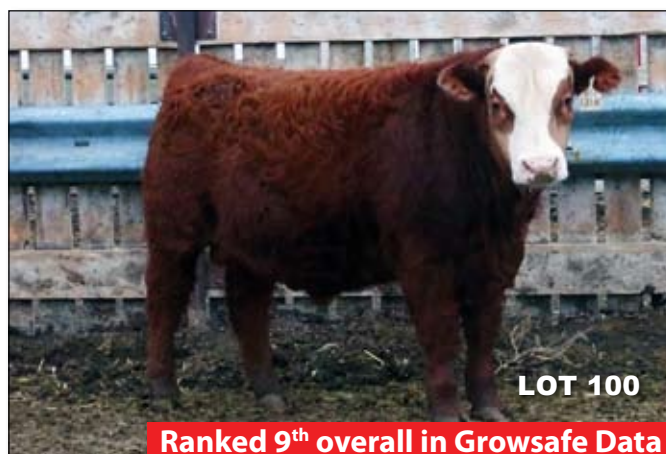
CE	BW	WW	YW	MM	TM	REA	IMF
-1.6	5.2	67	96	28	61	0.39	0.06

### HEREFORD PLUS 10089

Dam is another good young hereford cow with a great udder. He like 98 will keep getting better. Lots of hair and style.

ADG	EFF Index	FEED to GAIN	RFI Index	NHP Rank	NHP Index
3.90	109	4.89	104	9	106

BW	WW	205
93	630	579



LOT 100

Ranked 9<sup>th</sup> overall in Growsafe Data

## 101 GH BLACK AVATAR LAD 431H

BW: 85 lbs NHP 431H Jan 28, 2020

GH FORTITUDE EXTRA 15E PA FORTITUDE 2500  
GH 78U BEULAH 65A  
GH AVATAR TESS 164A HPH 145R AVATAR 5U  
MJT 228P TESS ET 327W

CE	BW	WW	YW	MM	TM	REA	IMF
N/A							

### NON Papered Hereford plus Angus

Nice calf BWF out of a great milking, top producing cow. Sire is an Angus bull with lots of growth but we used him on our heifers. He has a low BW and CE EPD. Should be a great cross.

ADG	EFF Index	FEED to GAIN	RFI Index	NHP Rank	NHP Index
3.84	130	119	95	31	115

BW	WW	205
85	666	627



LOT 101



# HEREFORD PLUS 2 YEAR OLD BULLS



**LOT 102**

## 102 GH WHEATLAND CROSSING 106G

BW: 89 lbs NHP 106G Jan 22, 2019  
WHEATLAND BULL 777E WHEATLAND KILL SWITCH  
WHEATLAND LADY 3189A  
GH MAGNUM LADY 274D MJT TOTAL ET 311W  
FA 71S BRITISHER LADY 60Y

CE	BW	WW	YW	MM	TM	REA	IMF
1.0	5.2	54	75	20	47	0.31	0.04

**PLUS 10040** This is why I have these Simi/Hereford crosses. The feet and legs on these are really impressive and the muscle is second to none. Ultrasound shows it as well with a plus 17" ribeye and 68.29 LMY. He's still carrying about a AAA marbling rating as well. The hair and pigment is also impressive. Not sure how we would change him. Sire is 777E so great disposition as well.

BW	WW	205	YW	LMY	BK Fat	IMF score	REA in <sup>2</sup>	REA/100#
89	598	572	1260	68.29	4.29	AAA-	17.13	1.11

ADG	EFF Index	FEED to GAIN	RFI Index	NHP Rank	NHP Index
3.46	100	7.13	93	24	98



**LOT 103**

## 104 GH CROSSBRED COWBOY 95G

BW: 90 lbs NHP 95G Jan 21, 2019  
ULTRA COWBOY 33E ULTRA CROWD TEASER 2C  
ULTRA COWGIRL 17A  
GH KILO LADY 102D MJT TOTAL ET 332W  
FA 235P BRITISHER LADY 124X

CE	BW	WW	YW	MM	TM	REA	IMF
0.7	4.6	61	88.6	21	51.6	0.47	0.03

**PLUS 10041** Sire is Ultra 33E Red Simi, smooth polled as well with good hair. Dam is a great hereford cow 102D Great carcass bull again. Just about AAA marbling with a 17 plus" REA and LMY of 68.29 He also excels in growsafe with a ADG of 3.9, 111index, F?G of 5.09 11I index and NHP 108.

BW	WW	205	YW	LMY	BK Fat	IMF score	REA in <sup>2</sup>	REA/100#
90	687	652	1393	68.14	5.24	AA+	18.15	1.11

ADG	EFF Index	FEED to GAIN	RFI Index	NHP Rank	NHP Index
3.90	111	5.09	103	44	108

## 103 GH 33E CROSSBAR COWBOY 40G

BW: 80 lbs NHP 40G Jan 14, 2019  
ULTRA COWBOY 33E ULTRA CROWD TEASER 2C  
ULTRA COWGIRL 17A  
GH DIXIE DUKE 115D MJT NITRO DUKE ET 78A  
FA HARLAND BRITISHER LADY 35W

CE	BW	WW	YW	MM	TM	REA	IMF
5.8	3.2	65	94	27	59	0.47	0.05

**PLUS 10038** Sire is our Ultra 33E Simi bull. Another simi x hereford with great carcass. 18.6" ribeye and 70.86 LMY. This guy has the extra length to add pounds to your calf crop. He's one of the leaner bulls and yet one of the heaviest due to length. ADG of 3.84, index 109

BW	WW	205	YW	LMY	BK Fat	IMF score	REA in <sup>2</sup>	REA/100#
80	791	730	1560	70.86	2.92	A-	18.57	1.08

ADG	EFF Index	FEED to GAIN	RFI Index	NHP Rank	NHP Index
3.84	80	6.87	81	156	90



# HEREFORD PLUS 2 YEAR OLD BULLS

## 105 GH CROSSRIB COWBOY 154G

BW: 93 lbs NHP 154G Jan 26, 2019

ULTRA COWBOY 33E ULTRA CROWD TEASER 2C  
ULTRA COWGIRL 17A

GH RIB 276W BRITISHER 511B FA 52S BRITISHER 276W  
FA 235P BRITISHER LADY 92T

CE	BW	WW	YW	MM	TM	REA	IMF
-2.0	4.6	57	74	26	55	0.38	0.06

**PLUS 10042** Another Simi/Hereford I like quite abit. 1.02 REA/100lb with a LMY of 68 and still AA marbling. In growsafe he did about breed average. ADG of 3.55 & NHP index 100

BW	WW	205	YW	LMY	BK Fat	IMF score	REA in <sup>2</sup>	REA/100#
93	765	744	1410	67.98	4.00	AA	16.15	1.02

ADG	EFF Index	FEED to GAIN	RFI Index	NHP Rank	NHP Index
3.55	98	5.84	102	94	100



LOT 105

## 106 GH WHEATLAND CROSSBRED 186G

BW: 85 lbs NHP 186G Jan 30, 2019

WHEATLAND BULL 777E WHEATLAND KILL SWITCH  
WHEATLAND LADY 3189A

GH 5Z ROCK MISS 326B GH 7101 ROCK SOLID 5Z  
DA 58U LADY BRITISHER 22Y

CE	BW	WW	YW	MM	TM	REA	IMF
0.09	4.6	68	96	26	60	0.54	0.10

**PLUS 10043** This guy just keeps getting better. He really excelled in growsafe with a 5.03 ADG indexing 143 F/G of 4.66, indexing 118 NHP index of 120. How would you like a group of steer to gain 5lbs/day and do it on only 21 DMI. You could make money on them. This is why we do growsafe.

BW	WW	205	YW	LMY	BK Fat	IMF score	REA in <sup>2</sup>	REA/100#
85	746	734	1480	67.97	2.86	AA+	14.94	0.90

ADG	EFF Index	FEED to GAIN	RFI Index	NHP Rank	NHP Index
5.03	118	4.66	99	34	120



LOT 106

## 107 GH BLK BLEND 635G

BW: 105 lbs NHP 635G Mar 6, 2019

GH SIR 413B BLEND 200D GH UPTOWN BLEND 413B

GH 78U JUBILEE LADY 35Z GH RIB 276W BRITISHER 511B  
GH ADAMS 110R JUBILEE 78U  
GH ADAMS CAPACITY TIBBIE 208W

CE	BW	WW	YW	MM	TM	REA	IMF
N/A							

Sells Non-PAPERED. BWF Hereford Angus cross. This is a pretty good one. His sire is a grandson of a bull we sold to Mexico. ADG of 3.44, 108 index 5.74 F/G indexing 102 & NHP index of 101. He will add lbs to your weaning wts.

BW	WW	205	YW	LMY	BK Fat	IMF score	REA in <sup>2</sup>	REA/100#
105	604	690	1525	65.81	4.60	AAA-	15.87	0.88

ADG	EFF Index	FEED to GAIN	RFI Index	NHP Rank	NHP Index
3.44	102	5.74	92	18	101



LOT 107

## 108 GH CROSSBRED LAD 614G

BW: 100 lbs NHP 614G Feb 26, 2019

GH 8052 MVP 67Y UPS KNIGHT 8052

GH ADAMS 796S DOMAN MISS 253W

COMM ANGUS N/A  
N/A

CE	BW	WW	YW	MM	TM	REA	IMF
N/A							

Sell Non-PAPERED

BWF Hereford x Angus. His sire is our MVP Hereford herd bull, one of the best female producers we have. Good RFI bull with a F/G ration of 102, RFI 4.90 indexing 109. NHP index of 99.

BW	WW	205	YW	LMY	BK Fat	IMF score	REA in <sup>2</sup>	REA/100#
105	612	677	1400	67.09	3.33	AAA-	14.46	0.88

ADG	EFF Index	FEED to GAIN	RFI Index	NHP Rank	NHP Index
3.20	102	4.90	109	56	99





[www.NelsonHirschePurebreds.com](http://www.NelsonHirschePurebreds.com)

RETURN ADDRESS:  
Nelson Hirsche Purebreds  
Box 388  
Stirling, Alberta T0K 2E0  
Canada

